



Building Capacity Worldwide in Measuring, Monitoring,
& Managing Forest and Terrestrial Carbon

Program Overview

Craig Wayson cwayson.silvacarbon@gmail.com

Slides courtesy Moses Jackson, USFS



OVERVIEW



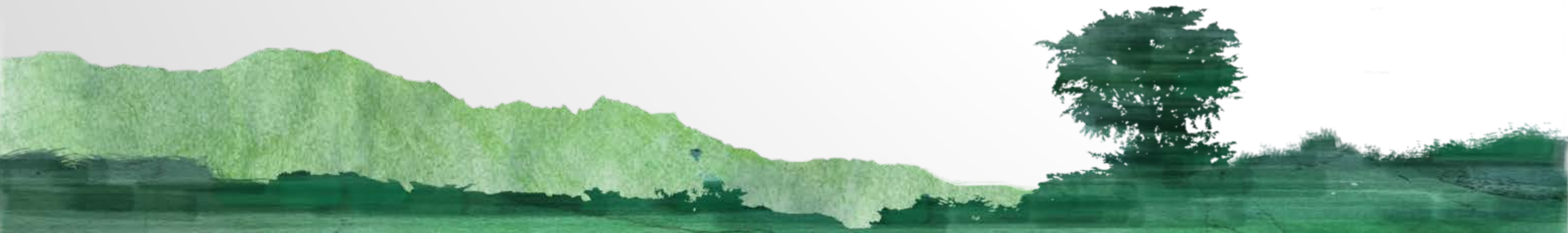
1. What is SilvaCarbon?
2. Who is involved in SilvaCarbon?
3. Where does SilvaCarbon work?
4. What does SilvaCarbon do?
5. Examples from the Andean Amazon
6. Current Work
7. Follow-up info

WHAT IS SILVACARBON?

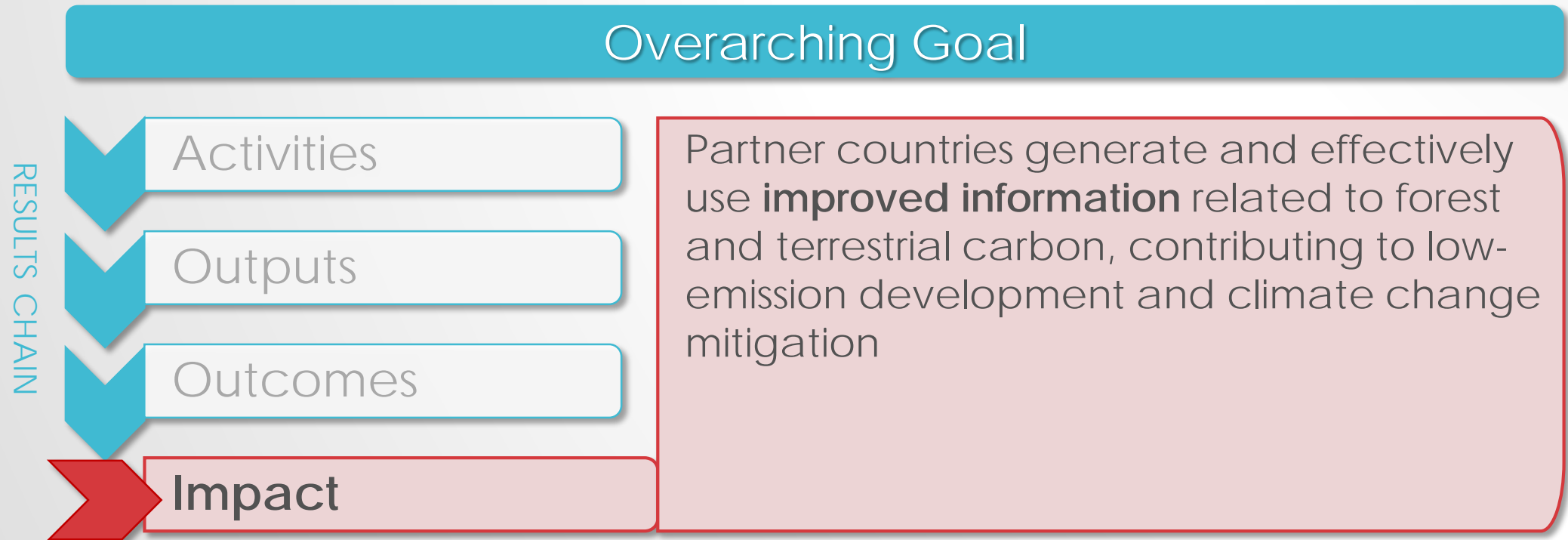
A technical cooperation program of the US Government to build capacity worldwide in measuring, monitoring, and managing forest and landscape changes, including changes in forest and terrestrial carbon.

Key characteristics:

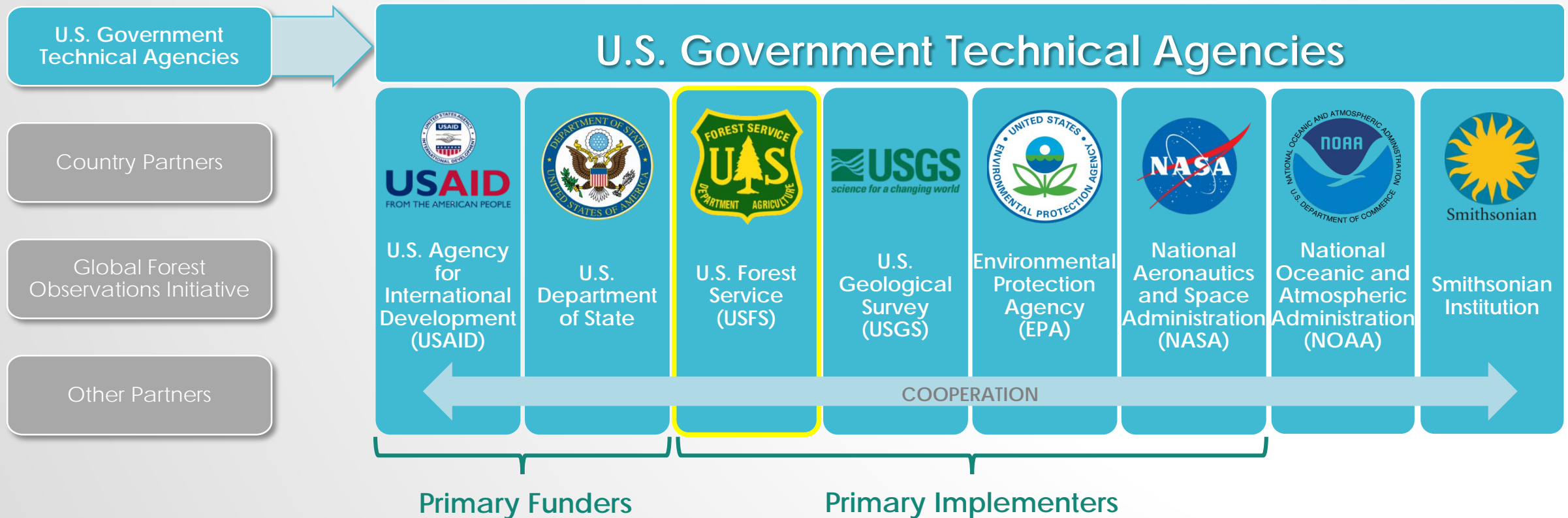
- Interagency: provides integrated support from multiple US agencies and partners
- Needs-based: fills technical capacity gaps, serves as a flexible science delivery tool
- Collaborative: facilitates cooperation at national, regional, and international scales



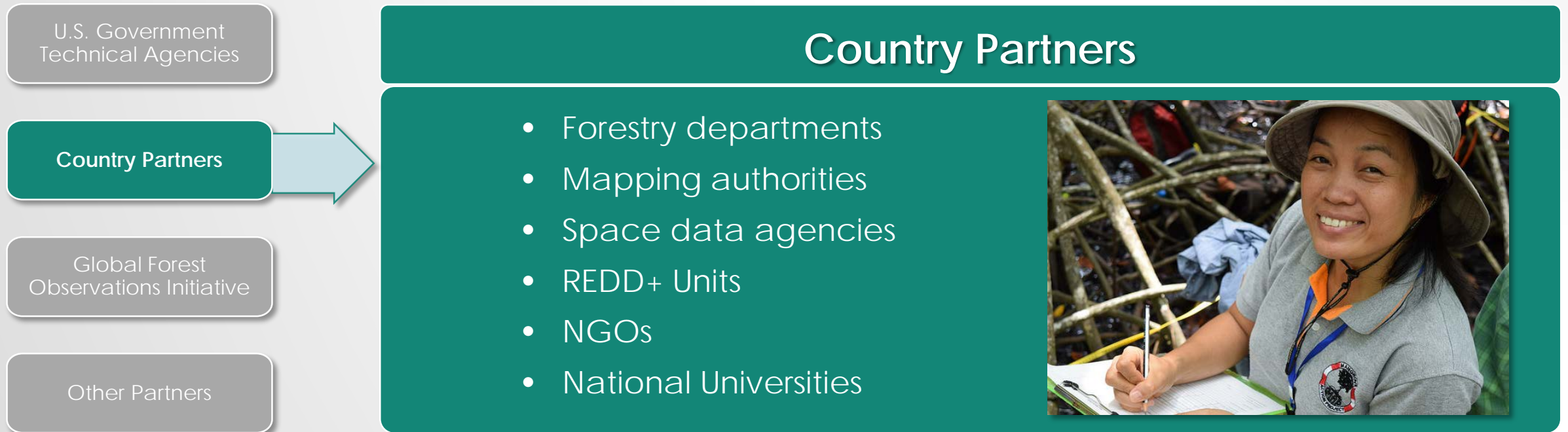
WHAT IS SILVACARBON?



WHO IS INVOLVED IN SILVACARBON?



WHO IS INVOLVED IN SILVACARBON?



WHO IS INVOLVED IN SILVACARBON?

U.S. Government
Technical Agencies

Country Partners

Global Forest
Observations Initiative

Other Partners



Global Forest Observations Initiative (GFOI)

- International consortium focused on increasing the use and availability of remote sensing data and tools for national forest monitoring
- SilvaCarbon is the primary US contribution to GFOI, with USGS and USAID as lead representatives
- SilvaCarbon co-leads the GFOI Capacity-Building component with FAO



Sylvia Wilson, USGS

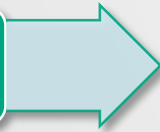
WHO IS INVOLVED IN SILVACARBON?

U.S. Government
Technical Agencies

Country Partners

Global Forest
Observations Initiative

Other Partners



Other Partners

- Academia
 - University of Maryland, Boston University, Wageningen, etc.
- Other donors and multilaterals
 - FAO, UN-REDD, World Bank, GIZ, etc.
- NGOs
- Companies



WHO IS INVOLVED IN SILVACARBON?

USG SUPPORT

US Global Climate Change Initiative

Enhancing Capacity for Low-Emission Development Strategies Program

Sustainable Landscapes Program

SilvaCarbon Program



Steering Committee

Research

Global Program

Country/Regional Programs

Latin America
& Caribbean
Program

South &
Southeast
Asia Program

Bangladesh
Program

Vietnam
Program

Africa
Programs

Cooperation with other USG partners:

- USAID Missions
- SERVIR Hubs
- Climate Fellows
- SWAMP

SilvaCarbon
Technical Team

PARTNERS

Group on Earth Observations (GEO)

Norway Australia USA FAO CEOS

Global Forest Observations
Initiative (GFOI)

Country Partners

Other Partners

Academia

Other Donors & Multilaterals

WHERE DOES SILVACARBON WORK?

Latin America & the Caribbean

Costa Rica
Dominican Rep.
El Salvador
Guatemala
Honduras
Nicaragua
Panama

Colombia
Ecuador
Peru

AFRICA

Cameroon
Dem. Rep. of Congo
Rep. of Congo
Gabon
Mozambique

Asia

Bangladesh
Cambodia
Indonesia
Lao PDR
Nepal
Philippines
Thailand
Vietnam

23 tropical forested countries in FY17

WHERE DOES SILVACARBON WORK?

- Mixture of regional, bilateral, and global-level programming, depending on needs and opportunities



- Africa Programs – *mainly bilateral*
- Asia Regional Program – *mainly regional, some bilateral*
- Bangladesh Program – *bilateral*
- Vietnam Program – *bilateral*
- Latin America Program – *regional + bilateral*
- Global Program – *global-level activities, coordination*

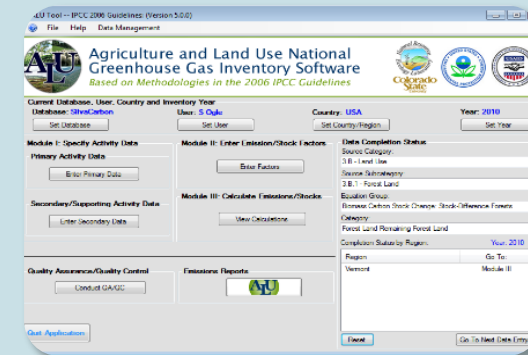
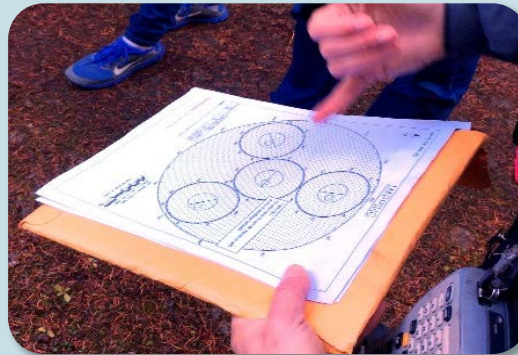
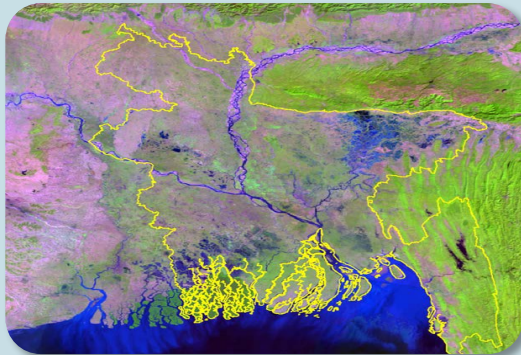
WHAT DOES SILVACARBON DO?

- Provides US technical expertise to assist countries to develop **national forest monitoring systems** (NFMS) that are robust, cost-effective, and tailored to their needs
- NFMS produce vital information on **forest change**, including forest carbon change, essential for:
 - ✓ ☐ Improving decision-making in the land sector
 - ✓ ☐ Participating in REDD+
 - ✓ ☐ Fulfilling emissions reductions commitments



WHAT DOES SILVACARBON DO?

Capacity-Building Focal Areas



Remote Sensing

- Analysis and acquisition of spatial data on landscape change

Forest Inventory

- Design and implementation of ground-based forest surveys

GHG Inventory

- Estimation and reporting of GHG emissions from the land sector

← INTEGRATION →

WHAT DOES SILVACARBON DO?

Capacity-Building Activities

Technical Assistance



Workshops



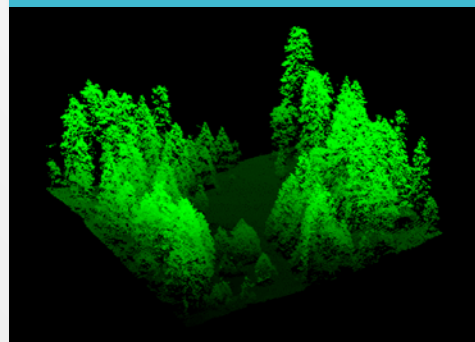
Study Tours



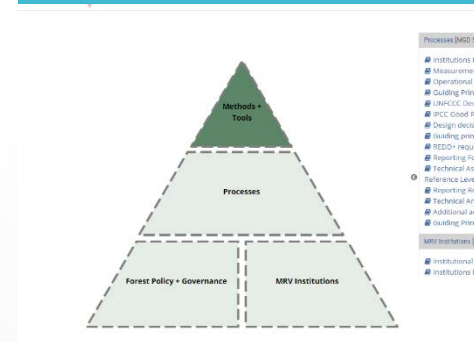
South-South Exchange



Applied Research

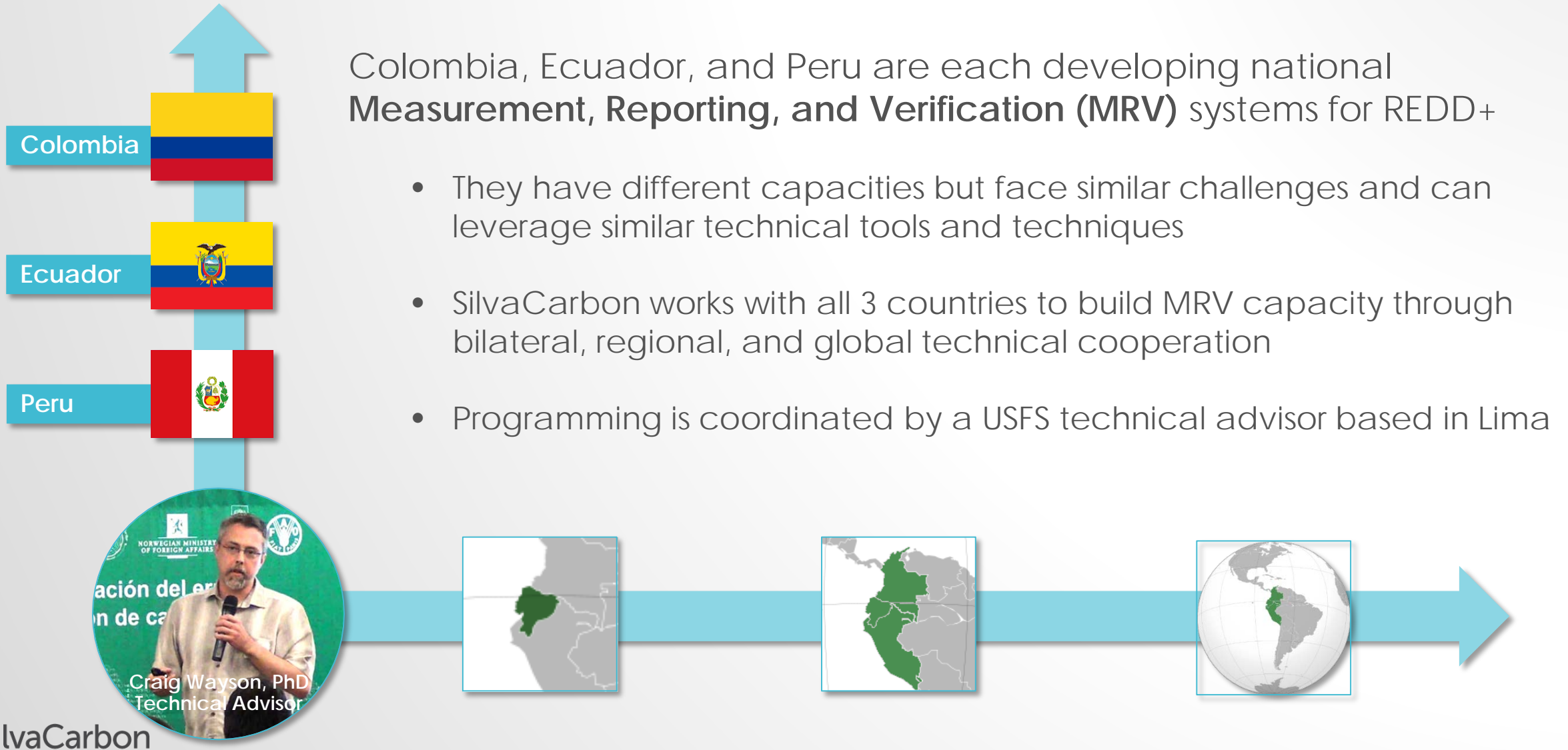


Tools & Guidance



SILVACARBON IN THE ANDEAN AMAZON

ILLUSTRATIVE EXAMPLES



SILVACARBON IN THE ANDEAN AMAZON

ILLUSTRATIVE EXAMPLES



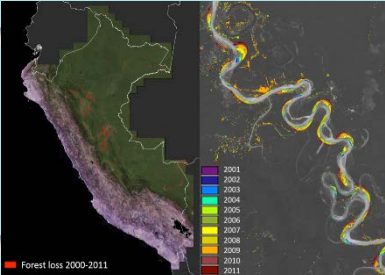
Regional Interaction

USGS organizes GFOI workshop to showcase forest monitoring tools & approaches, identify country needs, and build the regional community of experts



Bilateral Collaboration

Based on Colombia's identified needs, USFS organizes two-month technical detail by a forest inventory expert to assist with the redesign of the NFI



Partner Support

USGS supports UMD to work with the three countries to implement UMD's forest mapping methodology and provide related tools and training



South-South Exchange

Through SilvaCarbon, Peru and Ecuador collaborate with Colombia on its NFI redesign, and Colombia shares its mapping protocols with Ecuador and Peru



Global Engagement

USFS and USGS organize an international forum to share new SilvaCarbon research findings with the global SilvaCarbon community, including country practitioners



SILVACARBON IN THE ANDEAN AMAZON

ILLUSTRATIVE EXAMPLES

➤ **Results** achieved with SilvaCarbon technical support:



Peru finalized its first large-scale forest-change map series, and is completing the first phase of its national forest inventory



Ecuador completed its first national forest inventory and now is working on its second cycle. It also completed its first forest-change map for an area typically covered by clouds



Colombia is able to generate estimates of forest cover change annually for the first time, and is implementing a national forest inventory

CURRENT WORK

- Strategic priorities from FY17 include:
 - Fostering **transparency** in forest/terrestrial carbon data
 - Strengthening national monitoring systems to address **multiple objectives** and respond to evolving **country needs**
 - Assisting countries to meet their **national and international commitments**
 - Increasing collaboration with and through **GFOI**



CURRENT WORK

FY17 Work Plan Activities, by Country/Region and Outcome				
	OUTCOME 1	OUTCOME 2	OUTCOME 3	TOTAL # of activities
	Enhanced capacity to measure/ monitor/report landscape carbon	Enhanced use of data in decision & policy making	Strengthened cooperation & agreement	
Asia Regional	7	2	4	13
Vietnam	10	1	3	14
Bangladesh*	-	-	-	19
Cameroon	7	-	1	8
ROC	2	-	1	3
DRC	2	-	1	3
Gabon	2	-	-	2
Mozambique	1	-	1	2
Central America	4	-	2	6
Andean Amazon	2	-	4	6
Global Program	9	-	12	21
* The Bangladesh Program contributes to separate, complementary Outcomes developed in collaboration with USAID/Bangladesh and FAO				97

FUTURE WORK/INFO

- Continue to work in program areas but moving to more advanced methods where applicable and with partner interest (e.g. AFOLU GHG estimation frameworks – Colombia {IDEAM}, time-series analysis)
- Support for NDC achievement (e.g. policy effects on emissions, restoration)
- Current funding levels into FY18...



FOLLOW-UP INFO

- SilvaCarbon Spotlight e-newsletter: <http://goo.gl/sSGDFL>
- SilvaCarbon website: www.silvacarbon.org (under development)
- USFS Global Program contacts:
 - Alex Moad, amoad@fs.fed.us
 - Sasha Gottlieb, sbgottlieb@fs.fed.us
 - Moses Jackson, mosesm.jackson@fs.fed.us
- Other Global Program contacts:
 - USGS: Sylvia Wilson, snwilson@usgs.gov
 - NASA-SERVIR: Africa Flores, africaixmucane.florescordova@nasa.gov
 - EPA: Mausami Desai, desai.mausami@epa.gov