

1. January 2015 – 31. December 2017



GLOBBIOMASS

<http://globbiomass.org/>

DUE GlobBiomass - Introduction



Major Project Tasks:

1. Improve above ground biomass maps (stock and changes)
 - Better geometric resolution and
 - Improved accuracies
 - **global:** resolution **150-500 m** and accuracy expected **70%**,
 - **regional:** resolution **50-150 m** and accuracy expected **>80%**
 - **Validation (discrepancy map and error statistics)**
- 2.
- 3.
- 4.

DUE GlobBiomass - Introduction



Major Project Tasks:

1. Improve above ground biomass maps (stock and changes)
 - Better geometric resolution
 - Improved accuracy
 - Validation (discrepancy map and error statistics)
2. Platform for data sharing and validation
- 3.
- 4.

DUE GlobBiomass - Introduction



Major Project Tasks:

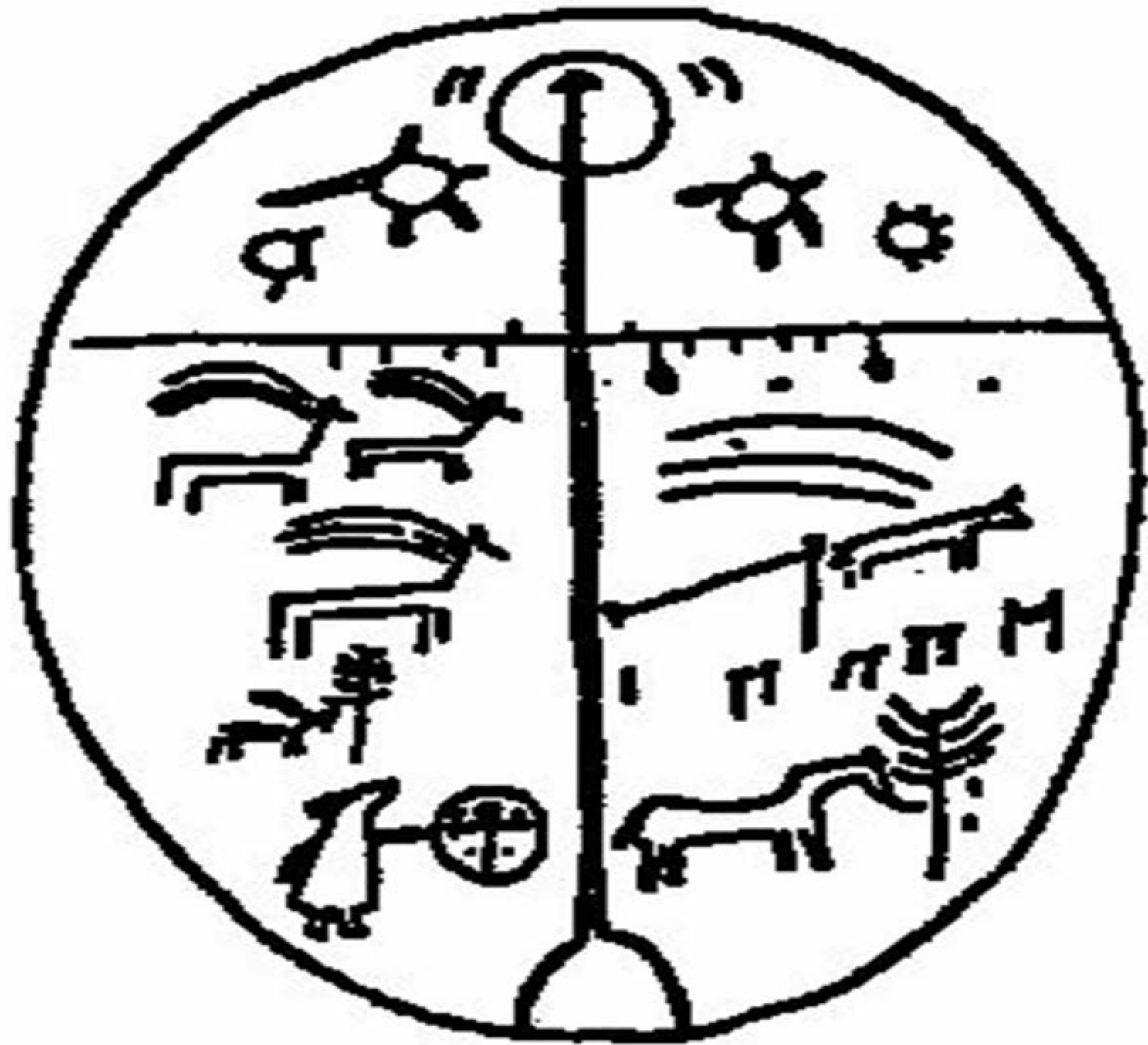
1. Improve above ground biomass maps (stock and changes)
 - Better geometric resolution
 - Improved accuracy
 - Validation (discrepancy map and error statistics)
2. Platform for data sharing and validation
3. Better stratification of landscape (forest types/species)
- 4.

DUE GlobBiomass - Introduction



Major Project Tasks:

1. Improve above ground biomass maps (stock and changes)
 - Better geometric resolution
 - Improved accuracy
 - Validation (discrepancy map and error statistics)
2. Platform for data sharing and validation
3. Better stratification of landscape (forest types/species)
4. Standardization of maps

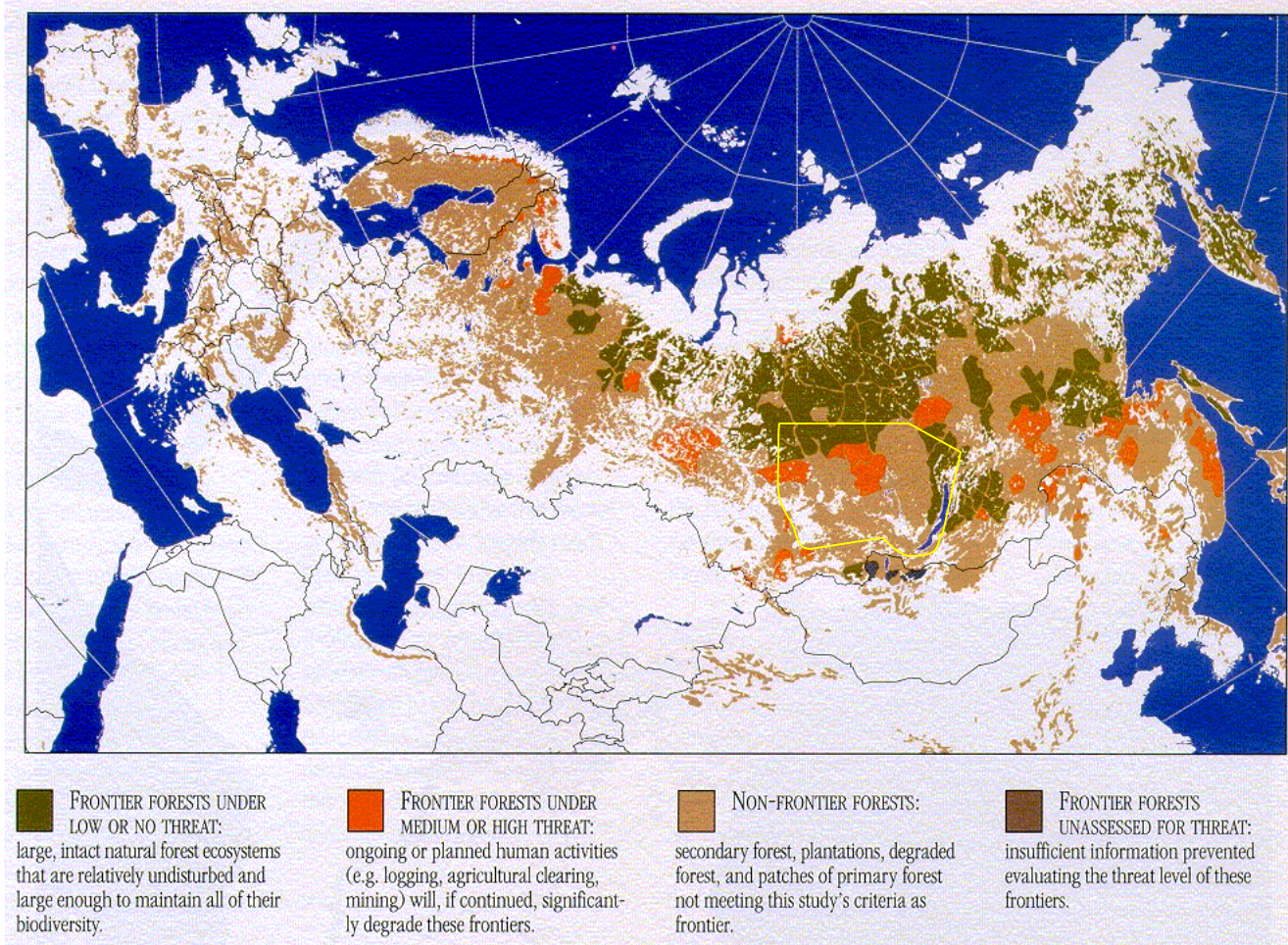


SIBERIA Field Trip 1999





Threatened frontier forests of Europe and Russia. Map published by World Resource Institute (1997).



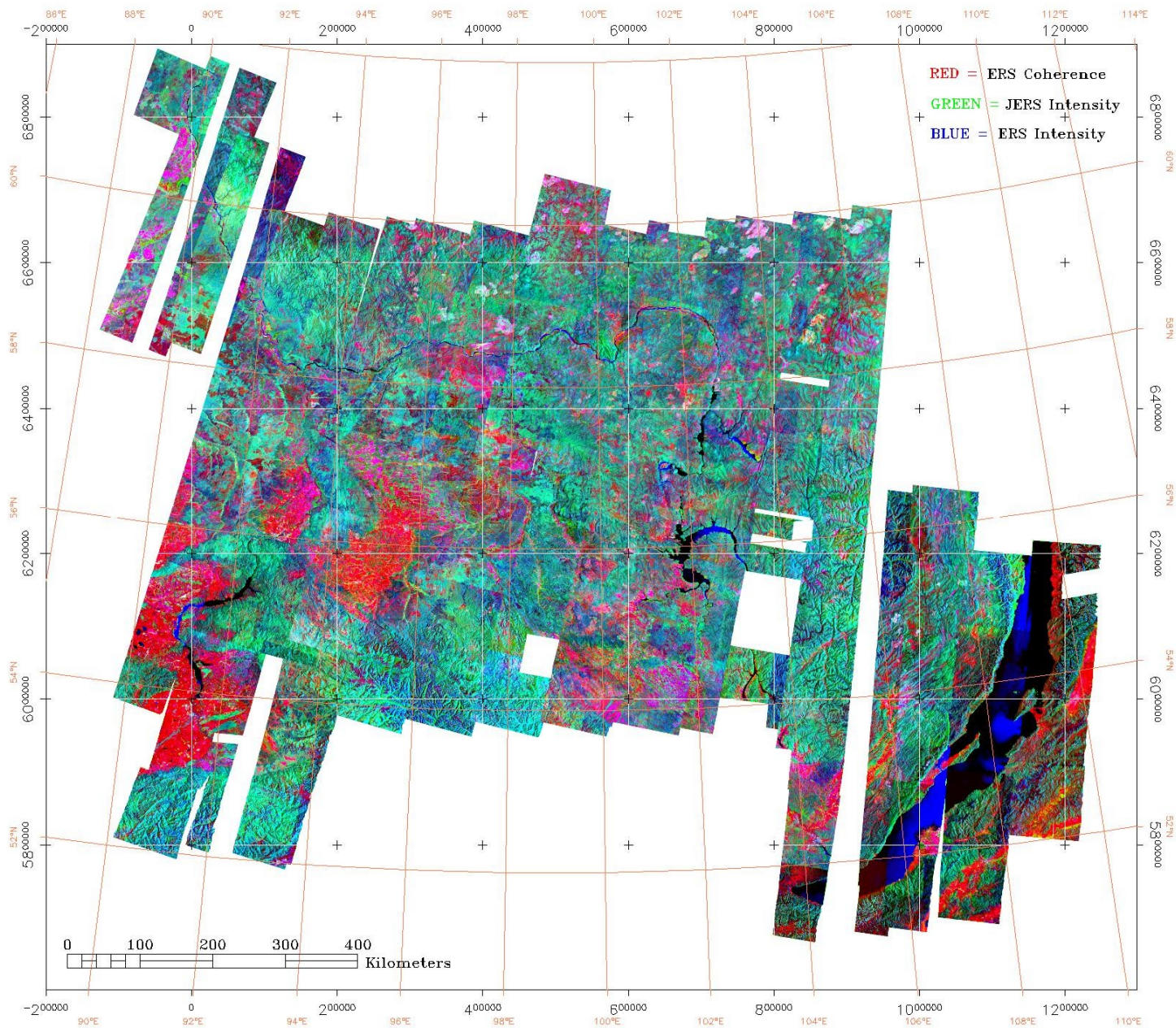


RGB Image Mosaic of ERS and JERS SAR Information *SIBERIA*

SAR Imaging for Boreal Ecology and Radar Interferometry Applications



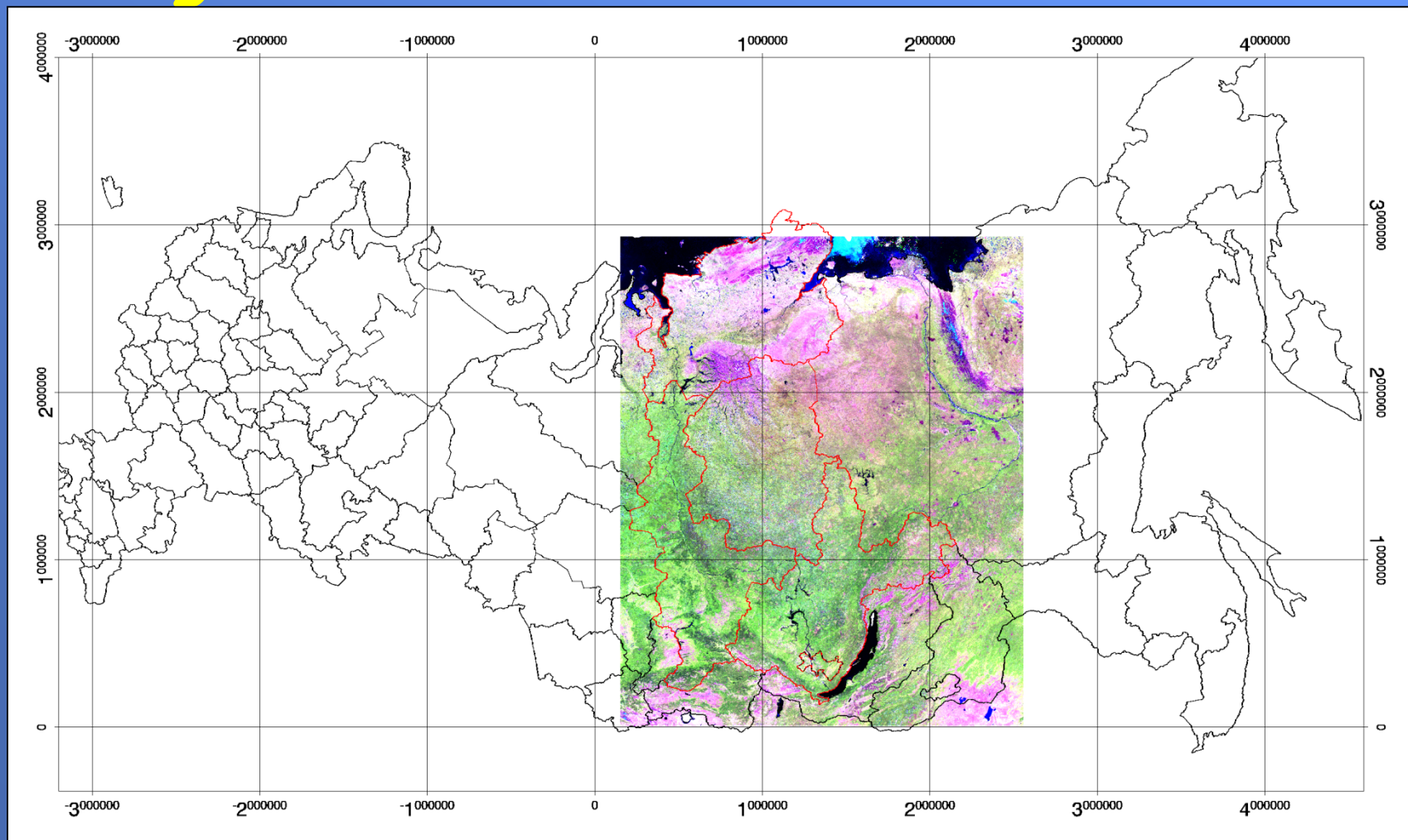
EU Community Funded
(ENV4-CT97-0749-SIBERIA)





SIBERIA-II:

Multi-Sensor Concepts for Greenhouse Gas Accounting of Northern Eurasia

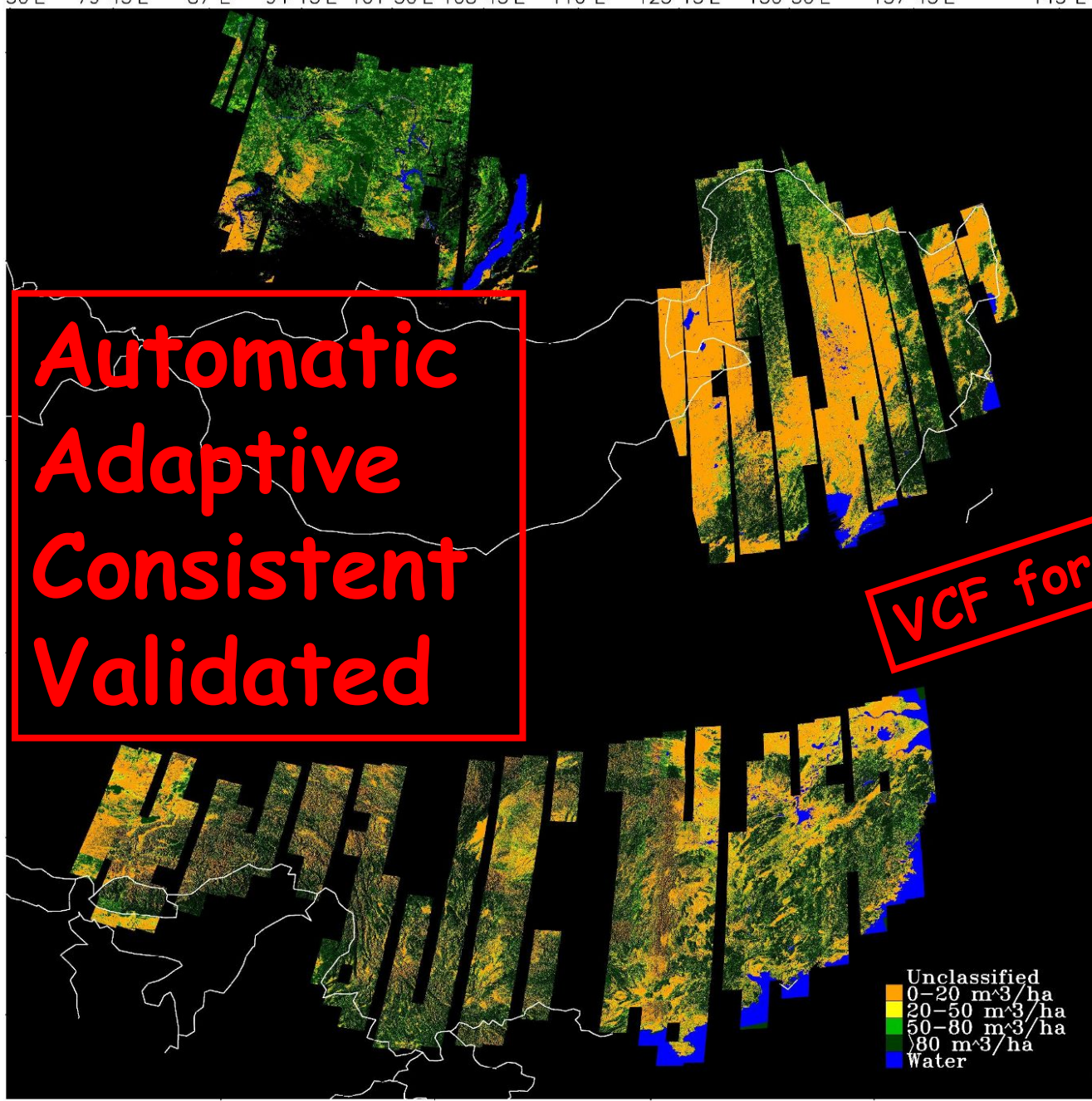




72°30'E 79°45'E 87°E 94°15'E 101°30'E 108°45'E 116°E 123°15'E 130°30'E 137°45'E 145°E

58°N
50°45'N
43°30'N
36°15'N
29°N
21°45'N

50°45'N
43°30'N
36°15'N
29°N
21°45'N
14°30'N

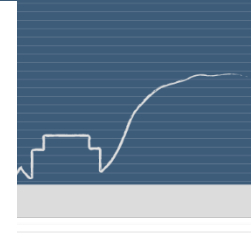


Automatic
Adaptive
Consistent
Validated

VCF for Retrieval

Unclassified
0-20 m³/ha
20-50 m³/ha
50-80 m³/ha
>80 m³/ha
Water

94°15'E 101°30'E 108°45'E 116°E





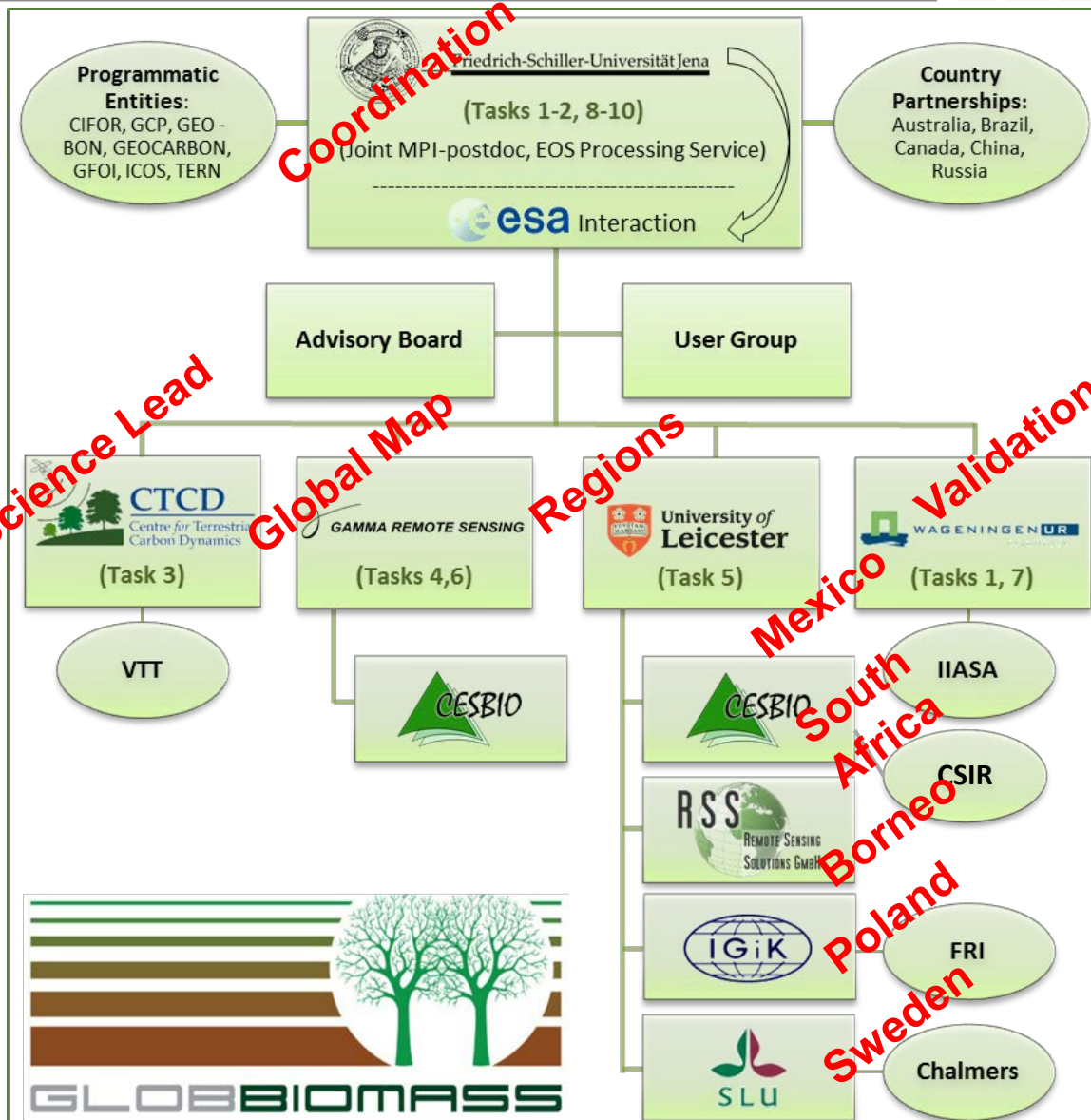
BIOMASAR-I/-II



Milestones, Phase 3

MS No.	Milestone Title	Due Date		WP	Responsibility
M12	Demonstration of global map and dissemination <i>/1st version /</i>	KO+27	31 March 2017 / 24 April 2017	6000	Gamma (CESBIO, MPI) ✓
M13	Regional Maps (2015) finalisation and dissemination	KO+29	15 August 2017	5000	UoL , IGIK, RSS, SLU, CESBIO ✓
M9(a)	Finalisation of Product Specification and Algorithm Design for Reference Map (2010) – global map	KO+30	30 September 2017	3000	UoS , (all Regional Partners, Gama, MPI)
M14	Validation of global map	KO+30	30 September 2017	7000	WUR (Gamma, all Regional Partners)
M15	Regional Change Maps (2000/2005, 2010/2015) finalisation and dissemination	KO+33	30 September 2017	3000	UoS , (all Regional Partners)
M16	Final Report	KO+36	(one week before CFR in December)	10000	Uni Jena (all Partners)

GlobBiomass Management



Advisors

Irena Hajnsek
Ralph Dubayah,
Josef Kelldorfer
Ake Rosenqvist/
Masanobu Shimada
Sassan Saatchi
Iain Woodhouse.

User Group

CFS
LSCE
Inst.f. World
Forestry
IICT
JRC
Mondi
NCEO
SKMBT
WHRC
World Bank
ZEBRIS
Zurich Univ.

...