



Food and Agriculture
Organization of the
United Nations

Global Forest Resources Assessment (FRA) 2020

FRA 2020 and GFOI - an overview

Anssi Pekkarinen

With financial support of





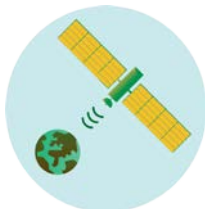
Sources of data

The FRA assessment is based on two primary sources of data:

- **COUNTRY REPORTS** prepared by the **National Correspondents** officially nominated by the countries;



- **REMOTE SENSING** conducted together with national **focal points and international partners**, such as the [Joint Research Centre](#) of the European Commission ([JRC](#))

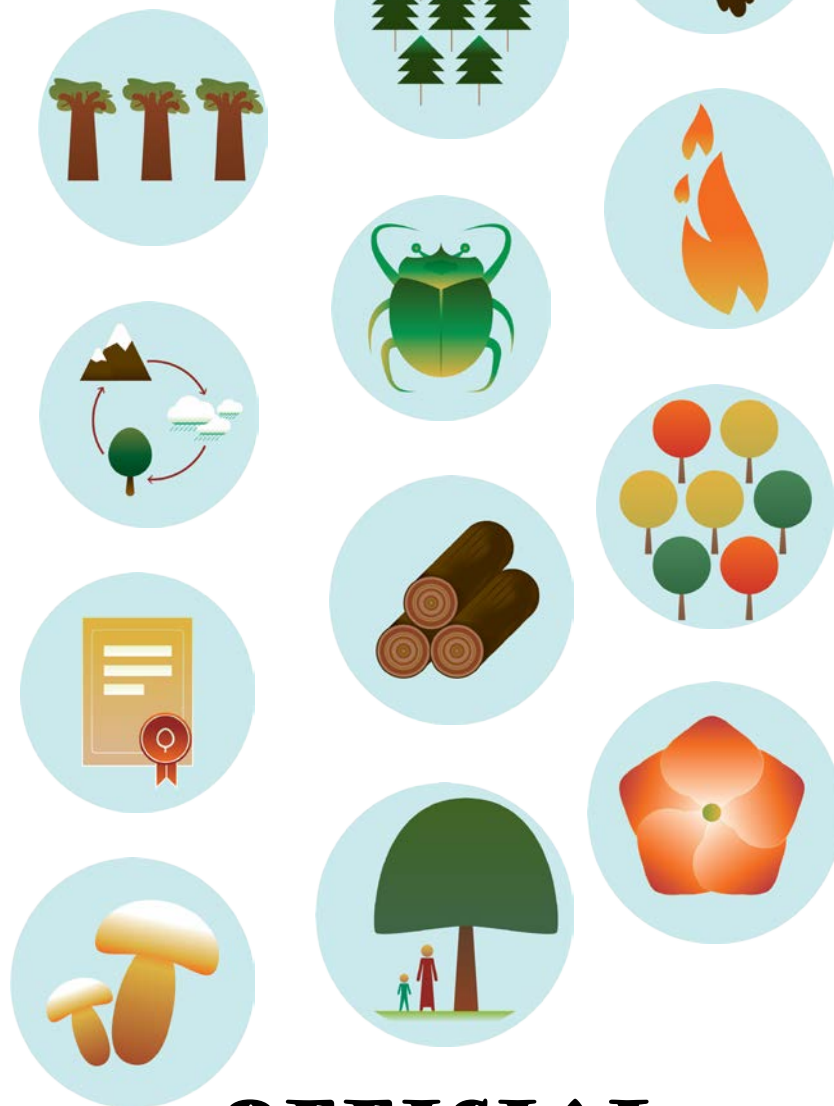




FRA reports on **many variables**

Including the current status and recent trends on:

- the **extent of the world's forest area**;
- Growing stock, **biomass** and carbon stocks;
- different aspects of sustainable forest management (**SFM**);
- **forest tenure** and **access rights**;
- **legal and institutional frameworks** related to forests and forestry
- ... and more



**OFFICIAL
NATIONAL DATA**



How does FRA 2020 work?

- ~ 170 National Correspondents
- New FRA Platform for data submission, review, analysis and reporting under construction
- Capacity Development (Reporting, Networking, Remote Sensing)



Continued Collaborative Forest Resources Questionnaire

- Central African Forests Commission (**COMIFAC/OFAC**)
- FAO Forestry (**FRA**)
- **FOREST EUROPE**
- International Tropical Timber Organization (**ITTO**)
- **Montréal Process**
- UN Economic Commission for Europe (**UNECE**)





Food and Agriculture
Organization of the
United Nations

Support to SDGs

Information provided by FRA will directly contribute to **measuring progress on the SDGs on forest-related indicators** under **Goal 15**, indicators **15.1.1** and **15.2.1**:

Sustainably manage forests, combat desertification, halt and reverse land degradation, halt biodiversity loss.

E-learning courses to support countries in reporting on SDGs





Global core set of forest-related indicators

- The FRA 2020 Expert Consultation reviewed the global core set and provided feedback to develop a revised version of the proposal (Annex 1 of FO:NAFC/2017/8 paper).
- The final draft will be submitted to UNFF13 and other governing bodies of CPF members during autumn 2017, as appropriate.



FRA platform

For reporting, review, analysis and dissemination

- Increase **consistency**
- Reduce reporting **burden**
- Improve **quality** and **transparency**
- Relevant **frequency**





Honduras

National Correspondent



National Data 3

Annually Reported 0/5

[Send to review](#)

1 Extent of forest
Edited 1h ago by Russell N

2 Growing stock
Not started

3 Biomass stock
Not started

4 Carbon stock
Not started

5 Protected areas and long-term
management plans
Not started

Five-year Cycle 0/12

[Send to review](#)

6 Forest area loss, gain and net
change
Not started

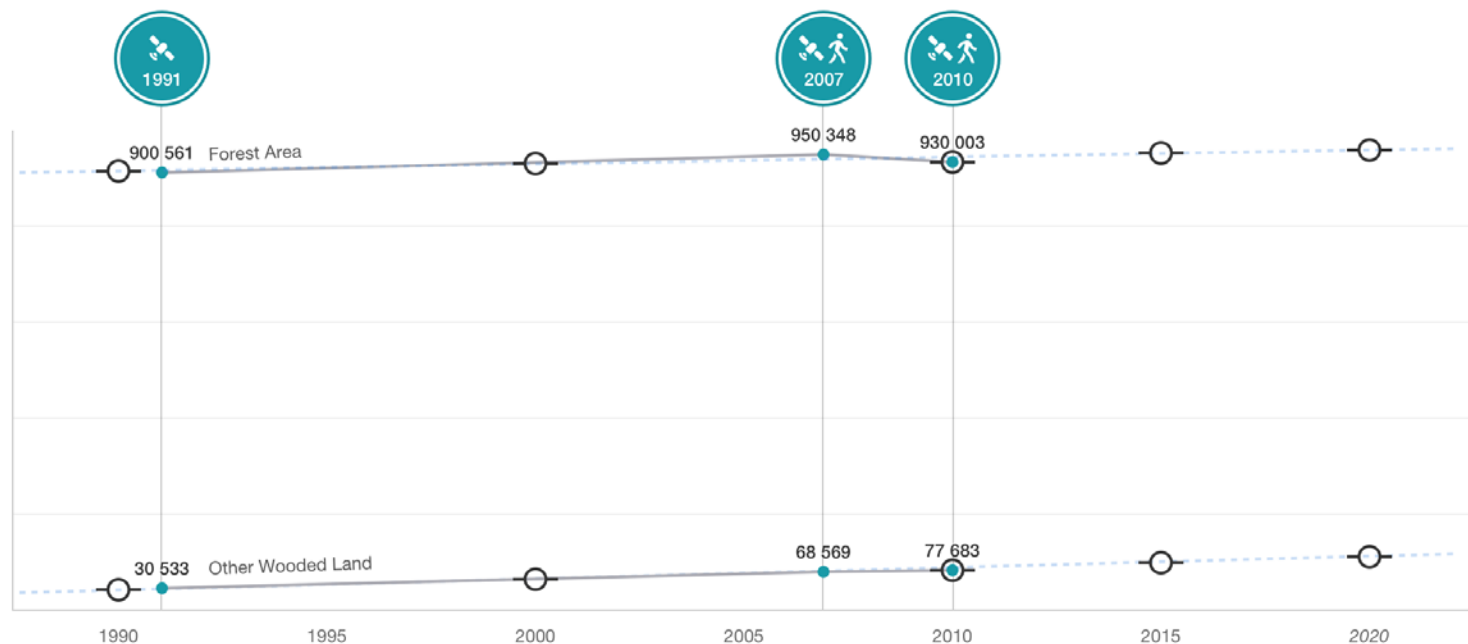
7 Forest characteristics
Not started

8 Specific forest categories
Not started

Extent of forest

Section status: ☒ Editing ☐ Ready

[+ Add national data point](#)



Extent of forest values

1 ha



Trend



[Generate FRA values](#)

	1990	1991	2000	2007	2010	2010	2015	2020
Forest	900 769	900 561	921 455	950 348	930 003	930 003	952 484	962 827
... of which temporarily unstocked								
Other wooded land	27 934	30 533	52 403	68 569	77 683	77 683	89 107	101 342



Global Forest Survey

towards global open access field inventory database



Data **compilation** and **collection**

- Two-phase sampling, post stratification
- Combination of remote sensing and field inventory

- Country review for RS
- Data submission and review mechanism
- Data compilation to be started in 2018





Global Forest
Observations Initiative



GFOI.ORG



FACEBOOK.COM/GFOI1



[@GFOI FOREST](https://@GFOI_FOREST)

- GFOI coordinates international assistance to developing countries on forest monitoring and GHG accounting.
- Through collaborative action, GFOI partners seek to achieve complementarity and avoid duplication in their assistance
- Informal partnership of countries and institutions



- Founded under Group on Earth Observations (GEO) in 2011
 - First work plan was 2012-13.
 - Operational ever since.
- Lead partners: currently Australia, Norway, USA, FAO & CEOS.
- Experts from UNFCCC, IPCC, World Bank FCPF, universities, technical and policy experts and other
- Open to new partners.



GFOI Components



Capacity Building

Works directly with countries, through the US SilvaCarbon and UNREDD-FAO programmes, to help develop national forest monitoring systems and associated capacities. This includes providing training in GFOI products and tools.



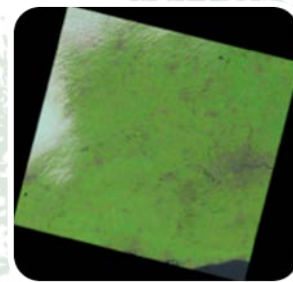
Methods and Guidance

Systematic workflow approach to forest monitoring and MRV. Provides direct links between UNFCCC decisions and the IPCC good practice and other guidance materials.



Space Data Coordination

Works with the world's civil space agencies, through CEOS, to ensure the long-term and worldwide acquisition of the core satellite datasets needed by countries to monitor their forests on an ongoing basis.



R&D Coordination

Coordinating the development of new technologies, datasets and methods for forest monitoring in a manner that best meets REDD+ countries' needs and priorities.



GFOI Leads and Office

The GFOI Leads provide overall oversight of the Initiative. The Office provides overall coordination and administrative support to the Leads Group, GFOI components, activities and partners.

- Provided operational guidance on MRV for REDD+: a first of its kind
 - Now being used to inform updated IPCC guidance (2019)
- Delivered complementary capacity building assistance to directly target developing country needs
- Assured annual wall-to-wall coverage of all the world's forested regions with remote sensing data in support of reporting by countries
- Established a forum of self-resourced experts to collaboratively address obstacles to progress
- Connected countries, donors, technicians, academia, space agencies under the one forum



- In response to the GFOI Review (2016) GFOI Phase 2 is being developed
 - Seeking to better align GFOI with the current global context, inc the Paris Agreement
- Renewed focus on collaboration for the benefit of developing countries
- Structured coordination mechanisms to simplify cooperation and make it easier for partners to attain and extract net benefits, including:
 - (i) **Country needs and gaps** assessments
 - (ii) **Joint work** planning to meet priority needs and gaps
 - (iii) **Collaborative implementation**, utilizing comparative advantages etc
 - (iv) Foster a **network of experts and organizations** to address obstacles to progress
 - (v) **Improved communications** and exchanges of information, expertise and resources.
- Continue with four components, with an expansion of scope for the newly named Data Component.

More information

 gfoi.org

 facebook.com/gfoi1

 twitter.com/gfoi_forest

 office@gfoi.org



THANK YOU!

