



Food and Agriculture Organization
of the United Nations

GLOBAL FOREST SURVEY

Key aspects

GlobBiomass 1st workshop, Vienna (Austria) , 02-05 Feb 2016

Supported by:



Federal Ministry for the
Environment, Nature Conservation,
Building and Nuclear Safety

based on a decision of the German Bundestag



OBJECTIVES AND VISION

- ◎ **Gathering and supporting** the collection of a global survey of Permanent Sampling Plots
- ◎ **Open access** through a web-based platform
- ◎ Spatially explicit approach with a focus on **forests Health and Ecology** (not limited to country borders).
- ◎ PSPs should take into account **Remote Sensing** needs

To help stakeholders, policy makers and scientific communities to address the upcoming challenges in forest resources management and related climate change issues.



OBJECTIVES AND VISION

- **Gathering and**
Permanent Sa
- **Open access**
- **Spatially expli**
Ecology (not I
- PSPs should t

Quote from the workshop :

“No ground data in the tropics”

“Lack of ground based knowledge
becomes a major limitation factor of
Forest Carbon Mapping”

“Access to European NFIs? ”

“No standardized worldwide data”

global survey of

ests Health and

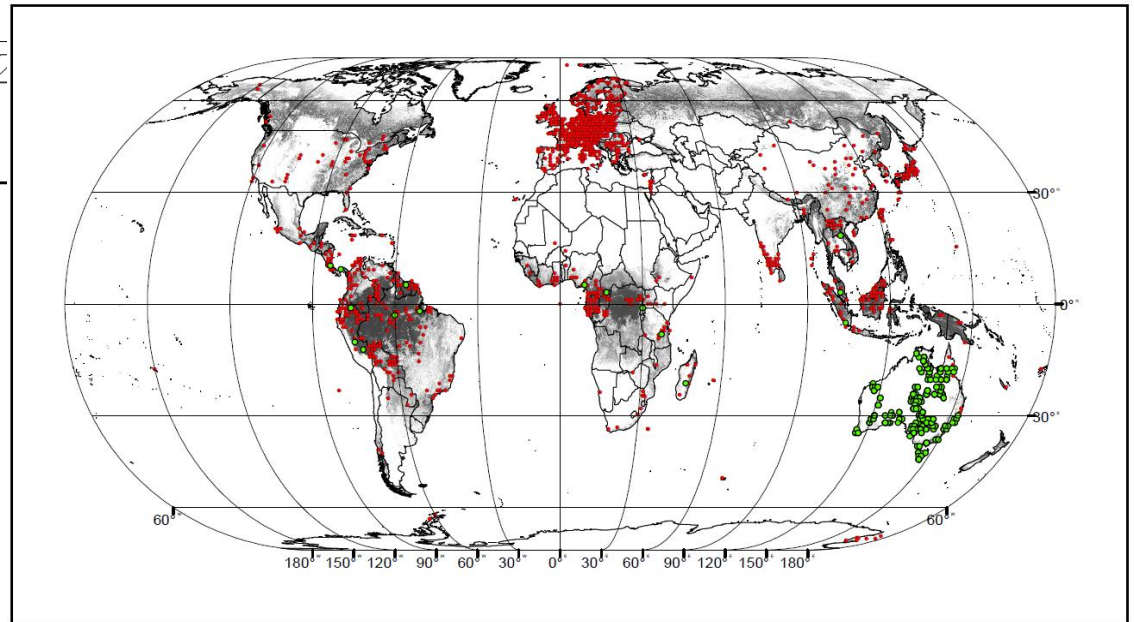
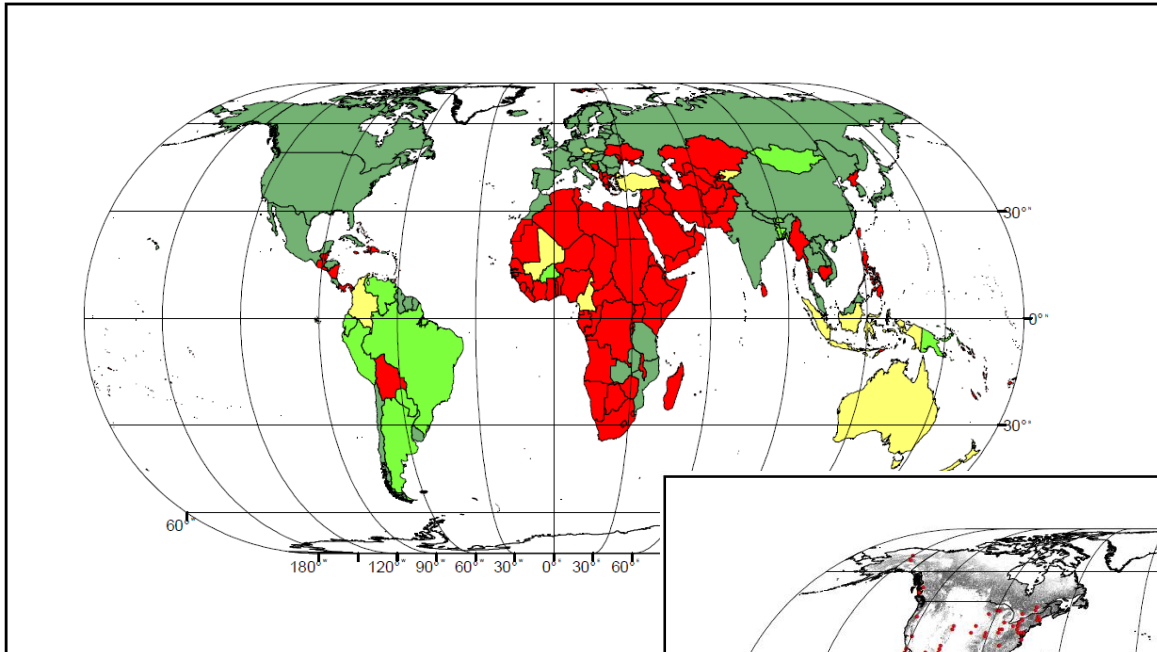
g needs

To help stakeholders, policy makers and scientific communities to address the upcoming challenges in forest resources management and related climate change issues.



NOT RE-INVENTING THE WHEEL

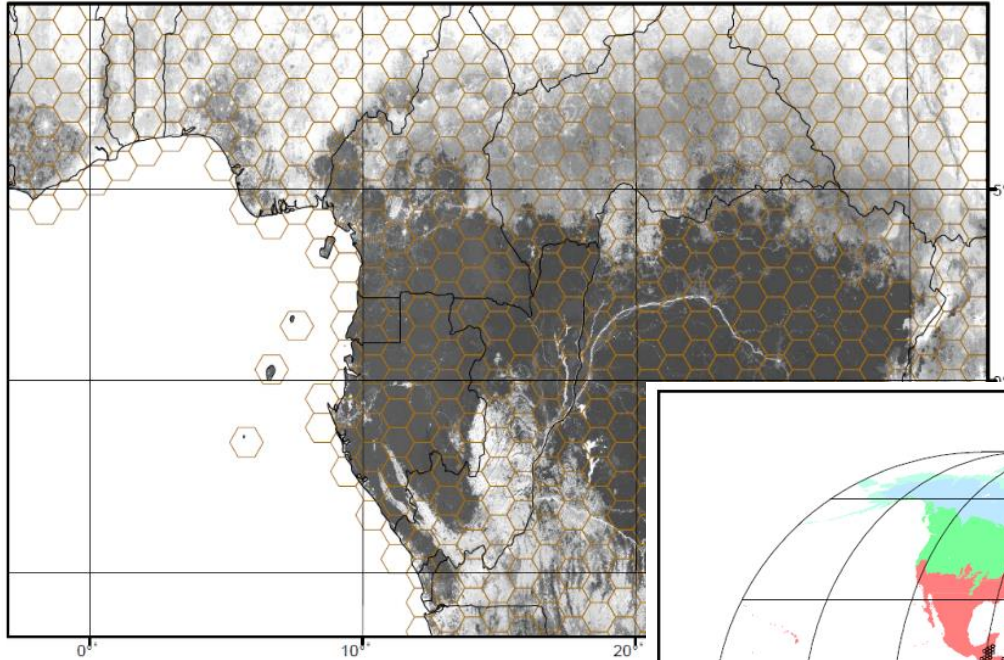
National Forest Inventories



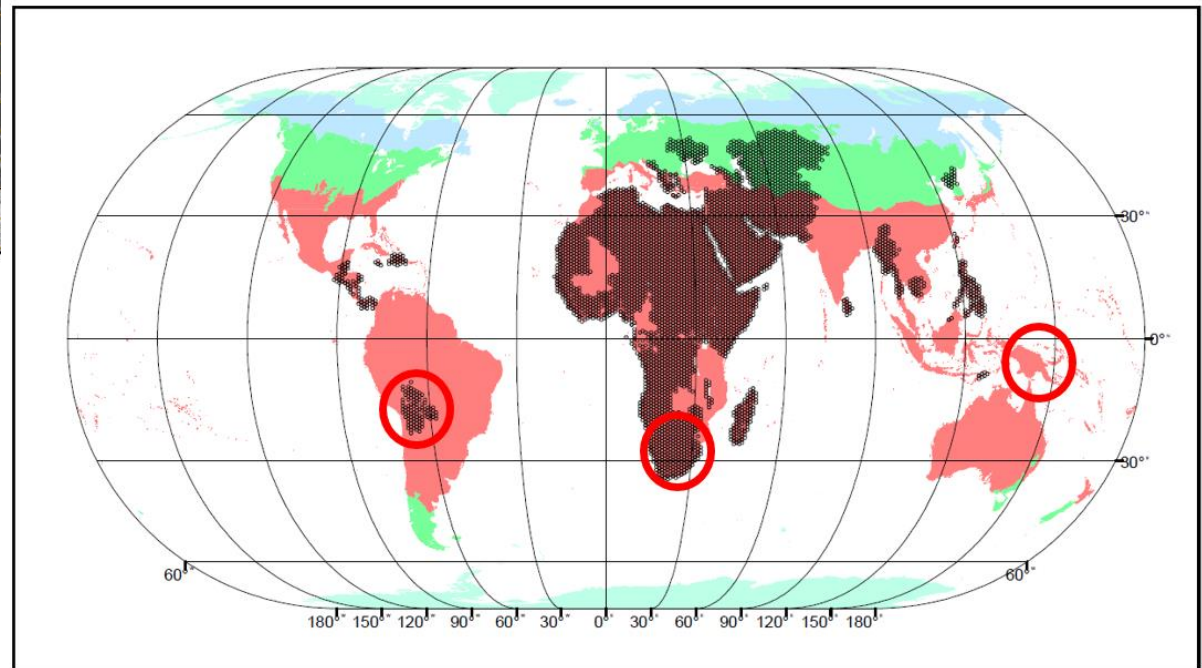
Research Network



GAPS AND PRIORITY ZONES



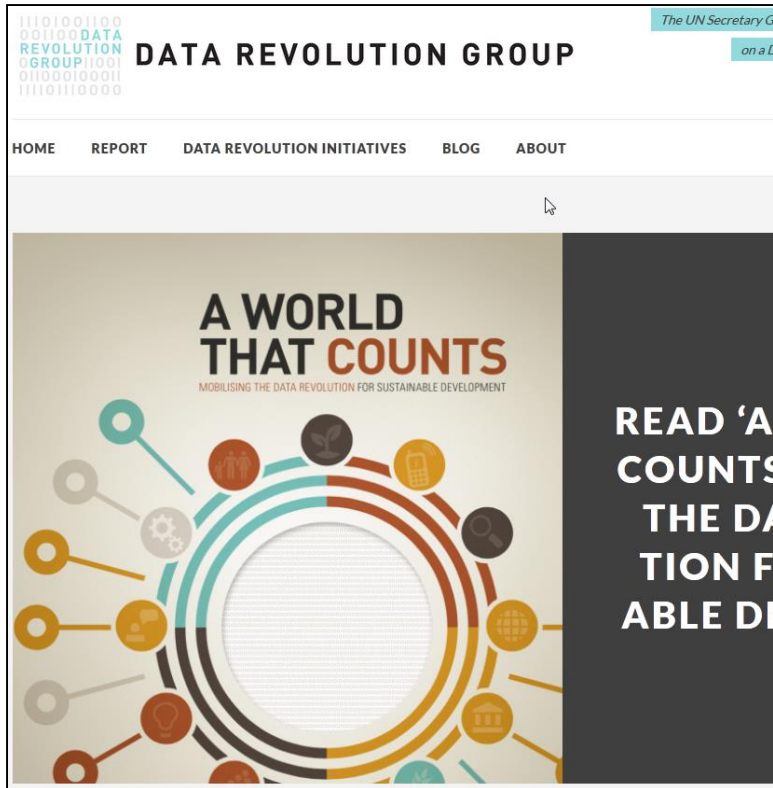
Level 1 : ~100km between hexagons



5500 without any Info.



OPEN ACCESS



» DATA TRANSPARENCY AND OPENNESS

Many publicly-funded datasets, as well as data on public spending and budgets, are not available to other ministries or to the general public. All data on public matters and/or funded by public funds, including those data produced by the private sector, should be made public and “open by default”, with narrow exemptions for genuine security or privacy concerns. It needs to be both technically open (i.e., available in a machine-readable standard format so that it can be retrieved and meaningfully processed by a computer application) and legally open (i.e., explicitly licensed in a way that permits commercial and non-commercial use and re-use without restrictions). The underlying data design and sampling, methods, tools and datasets should be explained and published alongside findings to enable greater scrutiny, understanding and independent analysis.



COMMONS CREATIVE

ABOUT THE LICENSES



Open policy through the Common Creative framework mandated for each field inventory supported by the project

MOST OPEN



CC0



BY



BY



SA



BY



ND



BY



NC



BY



NC



SA



BY



NC

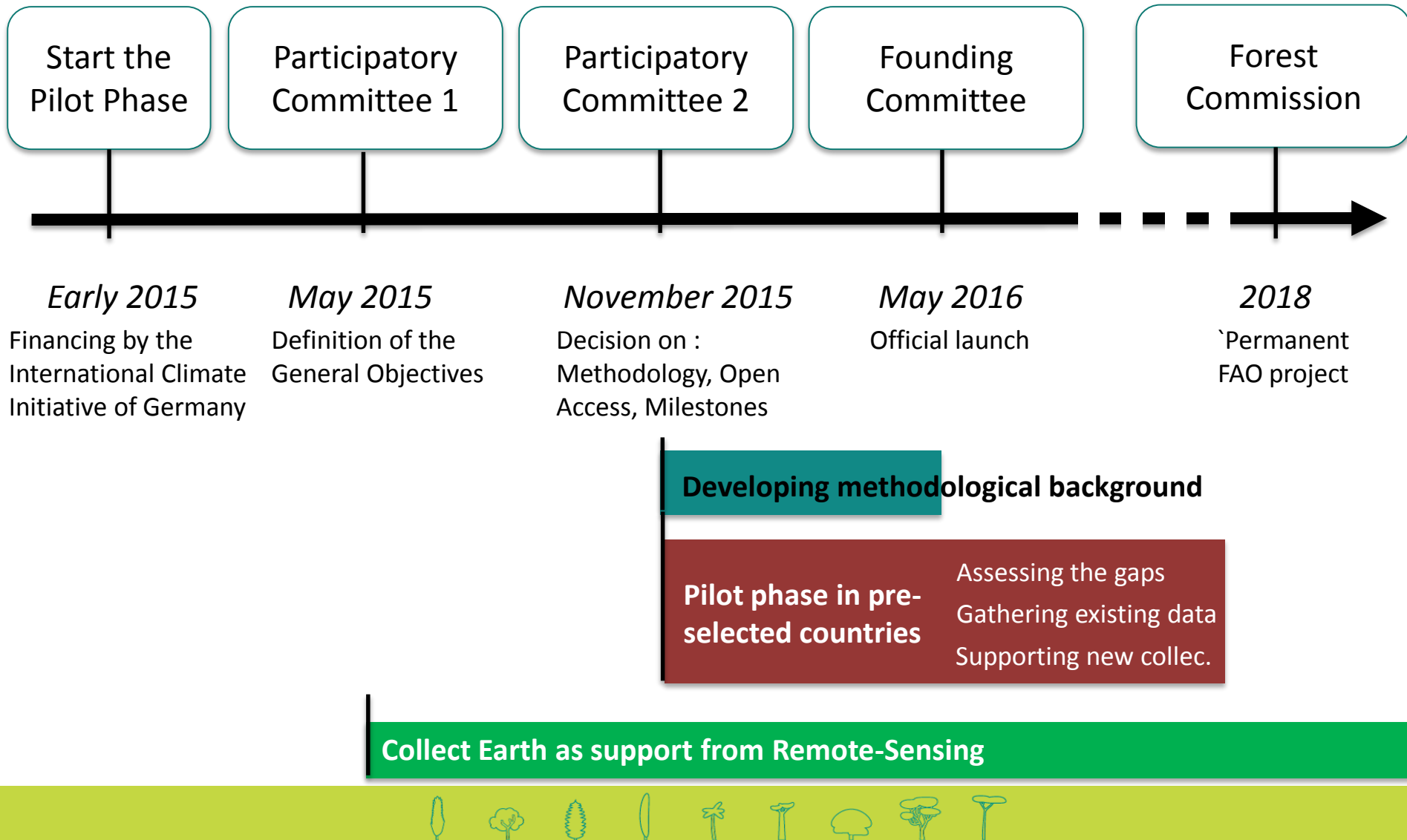


ND

LEAST OPEN



GFS AGENDA



INSPIRED BY

Global database initiatives



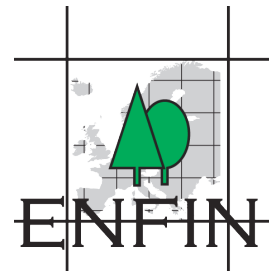
Open database initiatives



ausplots



Data harmonization initiatives




+ missing networks




WEBSITE

<http://www.fao.org/in-action/global-forest-survey/en/>




Food and Agriculture Organization
of the United Nations

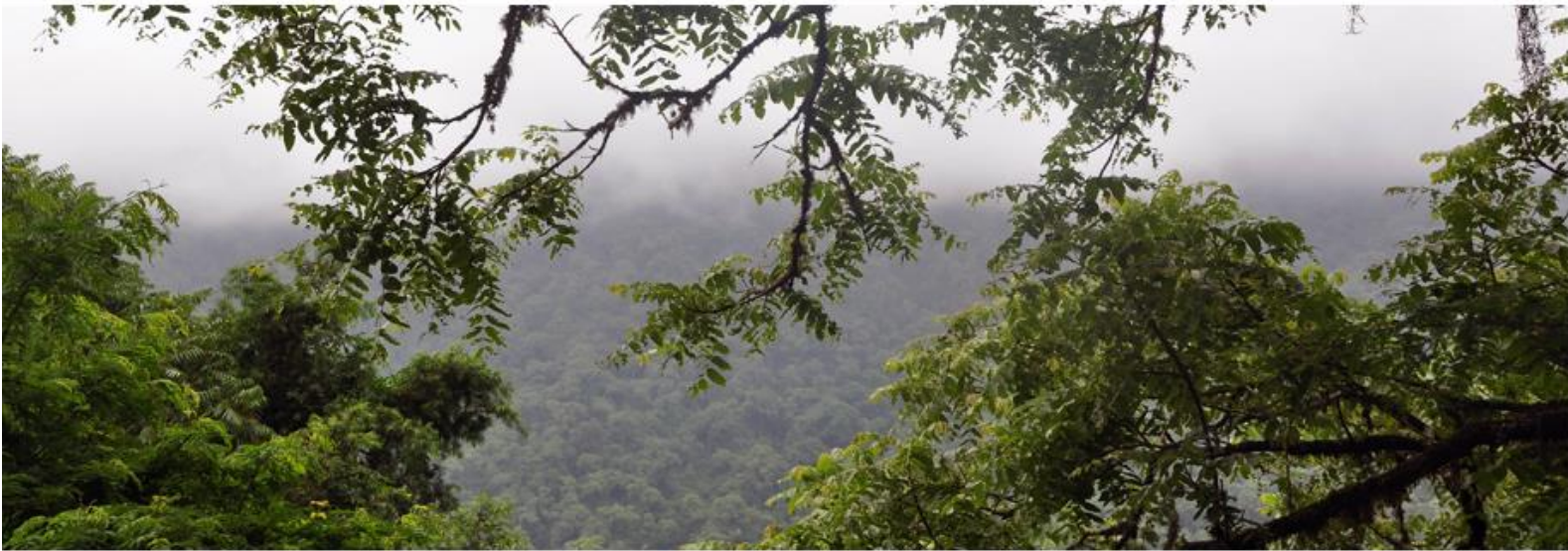
Google™ Custom Search 

About FAO | In Action | Countries | Themes | Media | Publications | Statistics | Partnerships

English

Global Forest Survey

 Background | Objectives | Pilot Activities | Events | Partners



FAO is implementing the Global Forest Survey (GFS) project with the support of the International Climate Initiative of the Federal Ministry for the Environment, Nature Conservation, Building and Nuclear Safety (BMUB) of Germany.

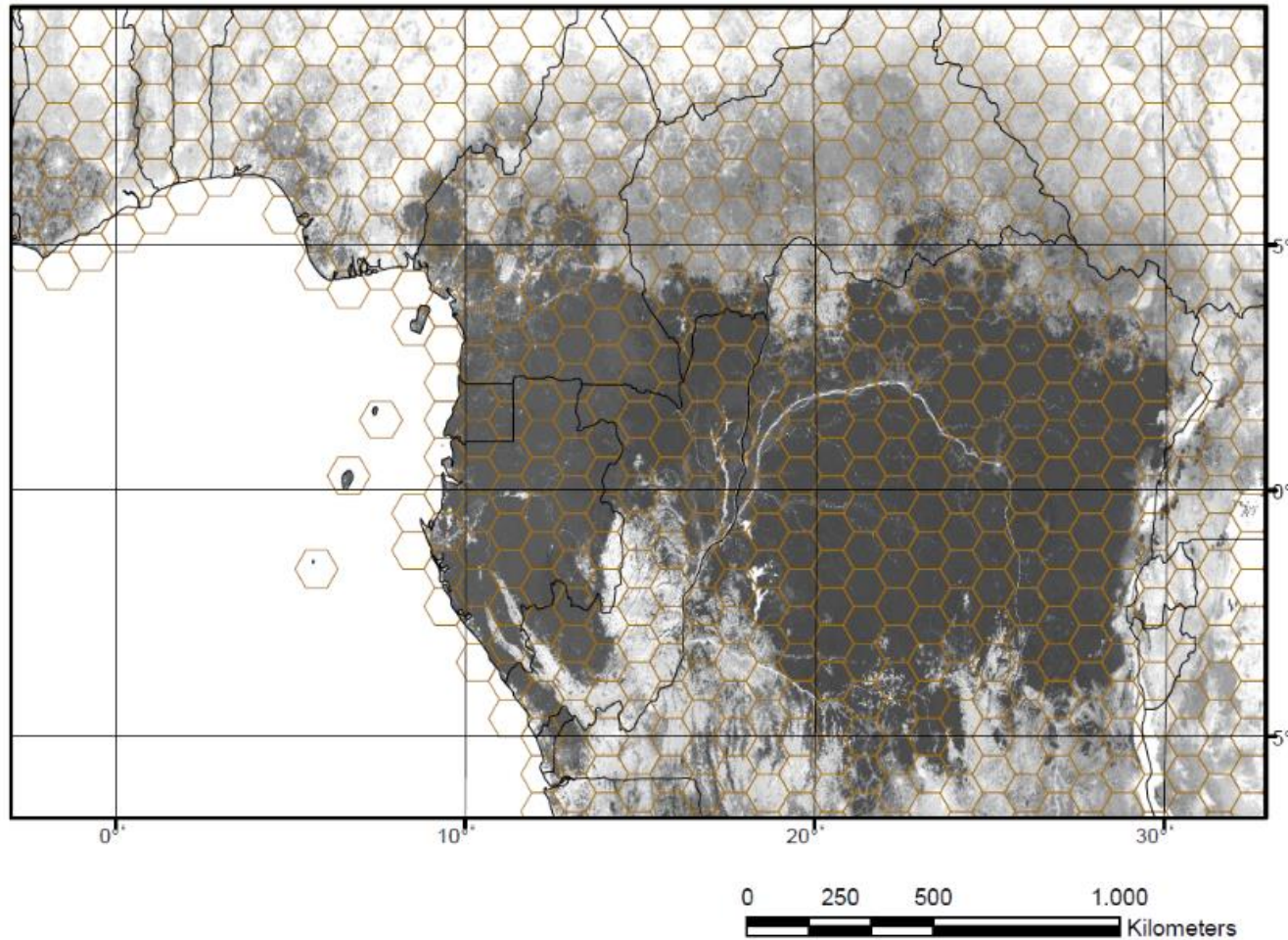
Related Links

- The Open Foris initiative

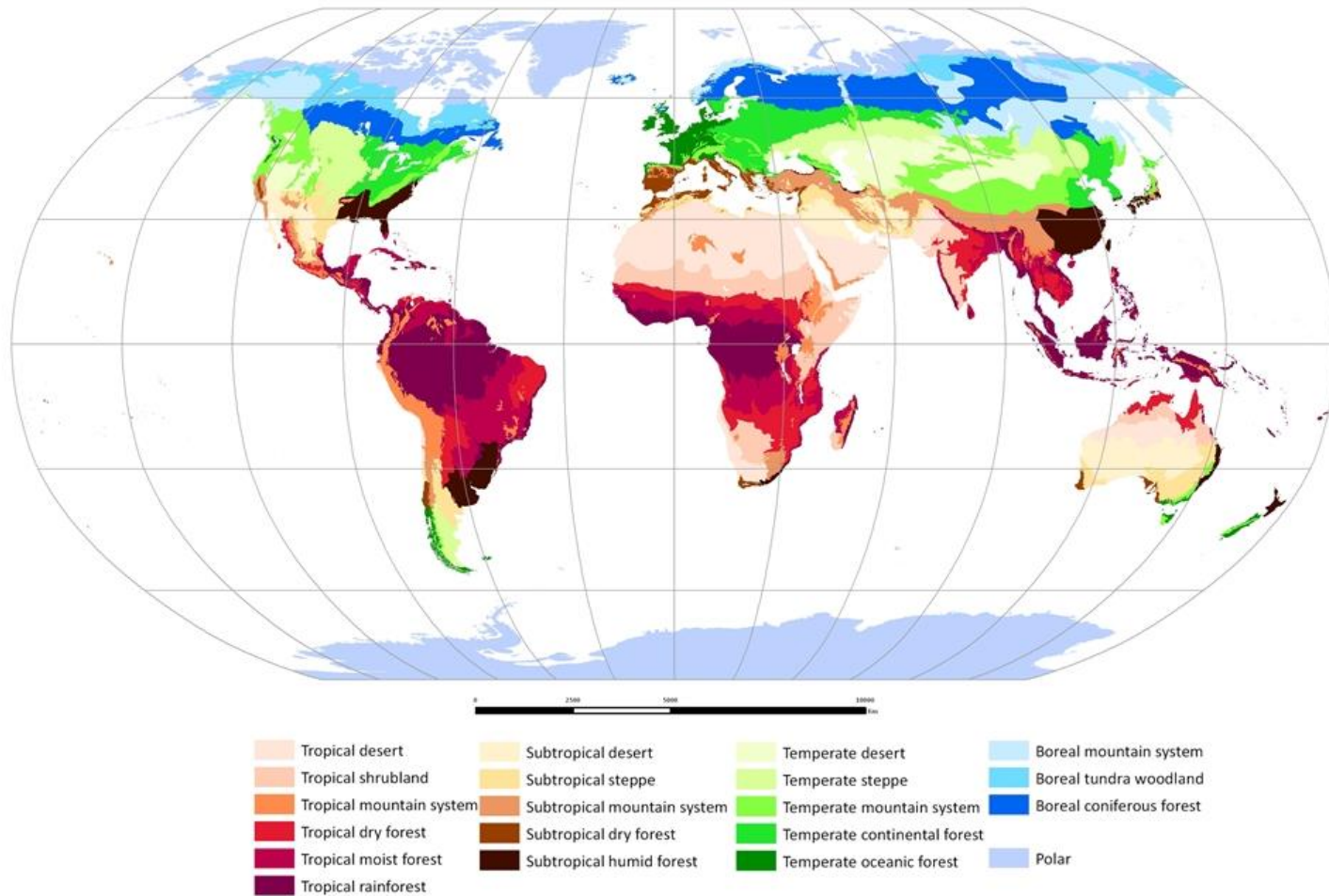
THANK
YOU



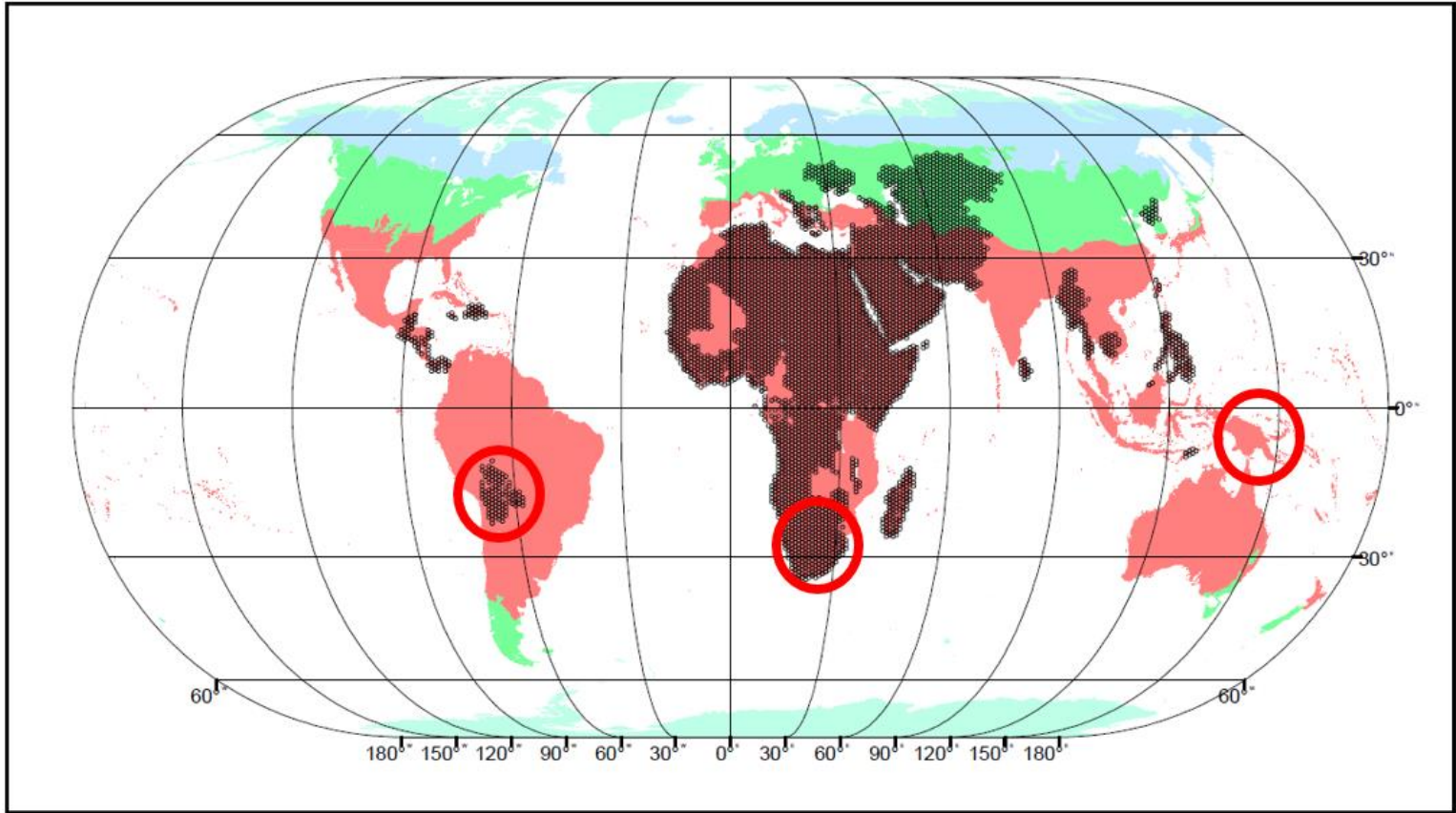
SUPPLEMENTARY



SUPPLEMENTARY



SUPPLEMENTARY



GFS AGENDA

- ◎ Start of the Pilot phase : Early 2015
 - Supported by the International Climate Initiative of Germany
- ◎ Participatory committee 1 (May 2015)
 - Decision on general objectives
- ◎ Participatory committee 2 (November 2015)
 - Decision on Open Access Policy
 - Decision on Ground Methodological Aspects
 - Definition of **the milestones** to reach before the Foundation Committee (**current work**)
- ◎ Founding committee (May 2016)
- ◎ Pilot phase in pre-selected countries (from July 2016)
 - Gathering the existing data
 - Identifying the gaps
 - Supporting data collection
- ◎ Permanent project in the Forest Commission (COFO 2018)

