

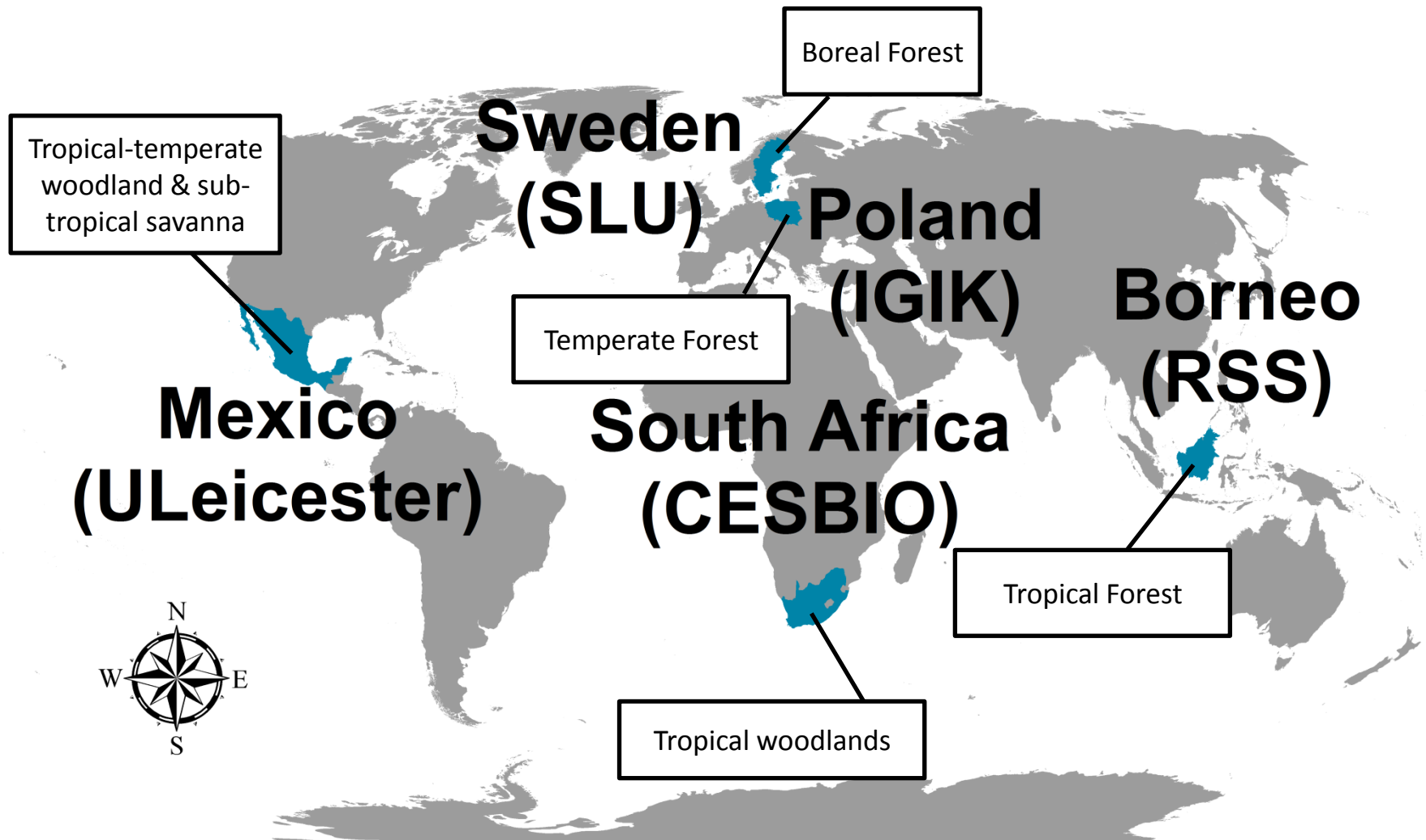
Task 5: Regional Biomass Estimation

Lead: University of Leicester

Heiko Balzter, Kevin Tansey, Pedro Rodríguez-Veiga

Agata Hoscilo, Dariusz Ziółkowski, Krzysztof Stereńczak, Maurizio Santoro,
Johan Fransson, Henrik Persson, Florian Siegert, Sandra Enghart, Matthias
Stängel, Thuy Le Toan, Stephane Mermoz, Alexandre Bouvet, Yriö Rauste,
Shaun Quegan, Joao Carreiras

- › Produce 5 regional biomass maps for 3 epochs
 - Epoch 1: 2000 or 2005
 - Epoch 2: 2010 (with accuracy assessment)
 - Epoch 3: 2015
- › Spatial resolution of the products < 150 m
- › Demonstrate biomass change maps between Epochs 1 & 2
- › Regions: Mexico, South Africa, Borneo, Sweden, and Poland



Deliverables Task 5



- › Start: KO+6 June 2015
- › End: KO+33 September 2017
- › Deliverables:

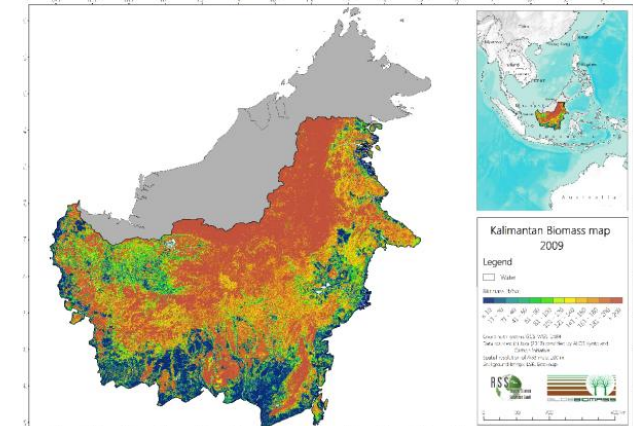
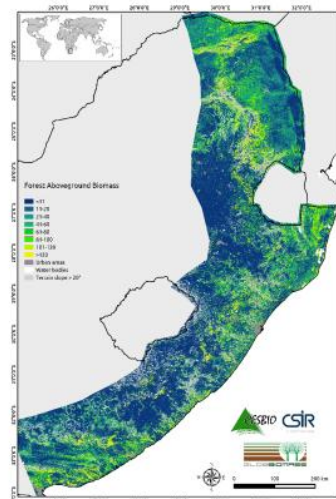
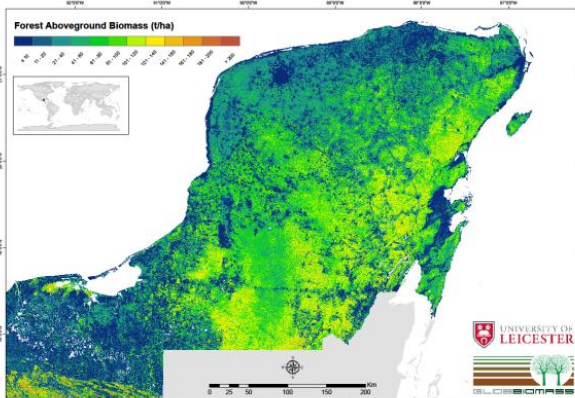
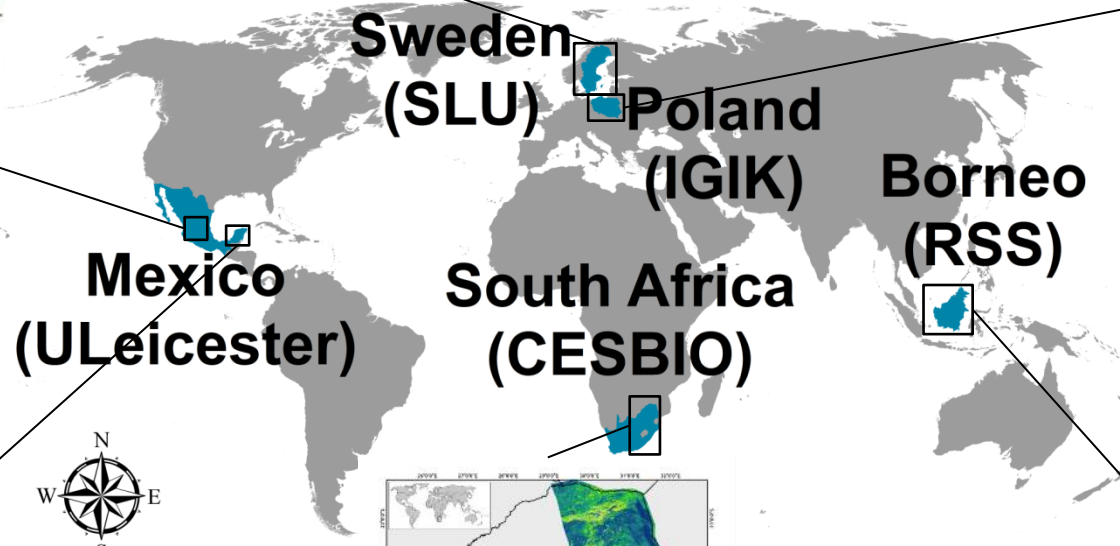
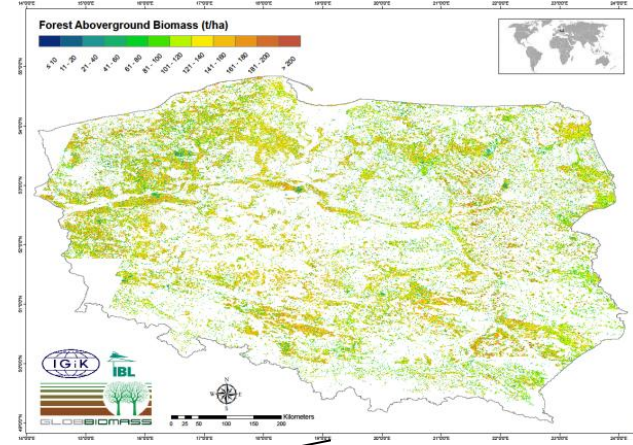
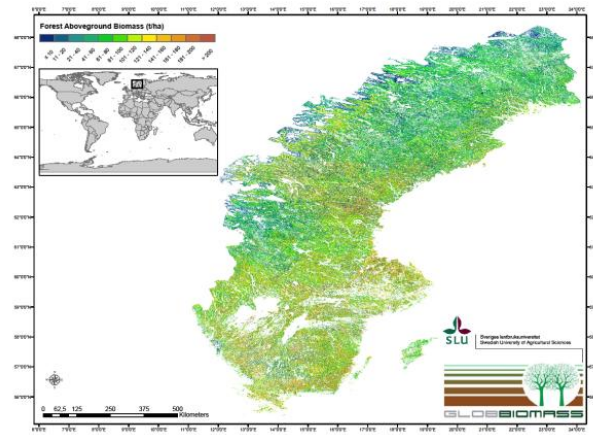
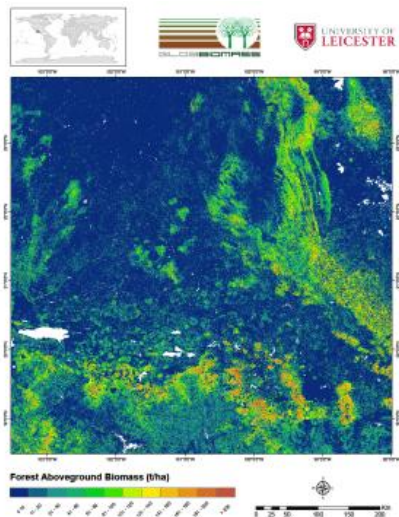
Deliverable			Deliverable type	Due date
No.	Title	Abbr.		
DA1	Product Development Method	PDM	Document Deliverable	KO+6
D11	Epoch 2: reference year 2010	RBM_E2	Product Deliverable	KO+12
D12	Epoch 1: 2000 or 2005	RBM_E1	Product Deliverable	KO+21
D13	Epoch 3: 2015	RBM_E3	Product Deliverable	KO+30
D14	Change maps	CM	Product Deliverable	KO+33
D15	Uncertainty characterization	UCC	Document Deliverable	KO+33

Progress Task 5

Activities	Dates	Progress
DA1 Product Development Method document to ESA	June/September 2015	✓
Guidelines on uncertainty and accuracy assessment for regional partners working note (input into D5 Validation protocol)	June/November 2015	✓
Regional algorithm developers meeting – Leicester	September 2015	✓
DA1 Input into the Algorithm Theoretical Basis Document	October 2015	✓
First versions of D11 Biomass 2010 epoch products	November 2015	✓
Submission D11 deliverable + readme file to ESA	December 2015	✓
Users Workshop & Second PM, feedback and way forward	February 2016	WORK IN PROGRESS CHECK BACK SOON!
Inter-comparison experiment + paper	2 nd Quarter 2016?	WORK IN PROGRESS CHECK BACK SOON!
D12 Biomass 2000/2005 products	September 2016	WORK IN PROGRESS CHECK BACK SOON!

D11 Regional Maps Epoch 2010

Partner/Region	Method	Datasets
UniLeicester Mexico	MaxEnt	ALOS PALSAR dual polarization, Landsat 7 Surface Reflectance, Landsat Percent Tree Cover, SRTM, Field data
CESBIO South Africa	WCM + MIPERS	ALOS PALSAR dual polarization, Landsat Percent Tree Cover, SRTM, Field data
IGIK Poland	Random Forest Regression	ALOS PALSAR dual polarization, IRS-P6/Resourcesat-2, Field data
RSS Borneo	Regression	ALOS PALSAR dual polarization, SRTM, Airborne LiDAR, Field data
SLU/GAMMA Sweden	kNN / BIOMASAR	SPOT 4 and SPOT 5, Field data / ALOS PALSAR dual polarization



Research Associate in Earth Observation

Ref	SEN00707
Department	Centre for Landscape and Climate Research
Job Type	Research
Specific Location	Bennett
Contract Type	Full Time Fixed Term Contract
Salary Range	

Job Purpose

Salary Grade 7 - £32,600 to £37,768 per annum

Fixed term contract for 11 months

Ref: SEN00707

At Leicester we're going places. As one of the leading universities in Britain our aim is excel in teaching and research. A commitment to high quality fused with an inclusive academic culture is our hallmark and led the Times Higher Education to describe us as "elite without being elitist".

We wish to appoint an excellent researcher to develop a prototype satellite image processing chain that provides summary information on forest cover change detection in near-real-time using open source software, obtain and process satellite imagery, produce the technical deliverables of the NERC follow-on project and collaborate with companies and government organisations in Kenya.

Informal enquiries are welcome and should be made to Professor Heiko Balzter on hb91@le.ac.uk or [0116 252 3820](tel:01162523820).

The closing date for this post is midnight on 14 February 2016.

Thanks