

JRC's perspective highlights from the Forest Resources and Climate Unit

**European Commission's Joint Research Centre (JRC)
Institute of Environment and Sustainability**

presented by P. Strobl

JRC's role:

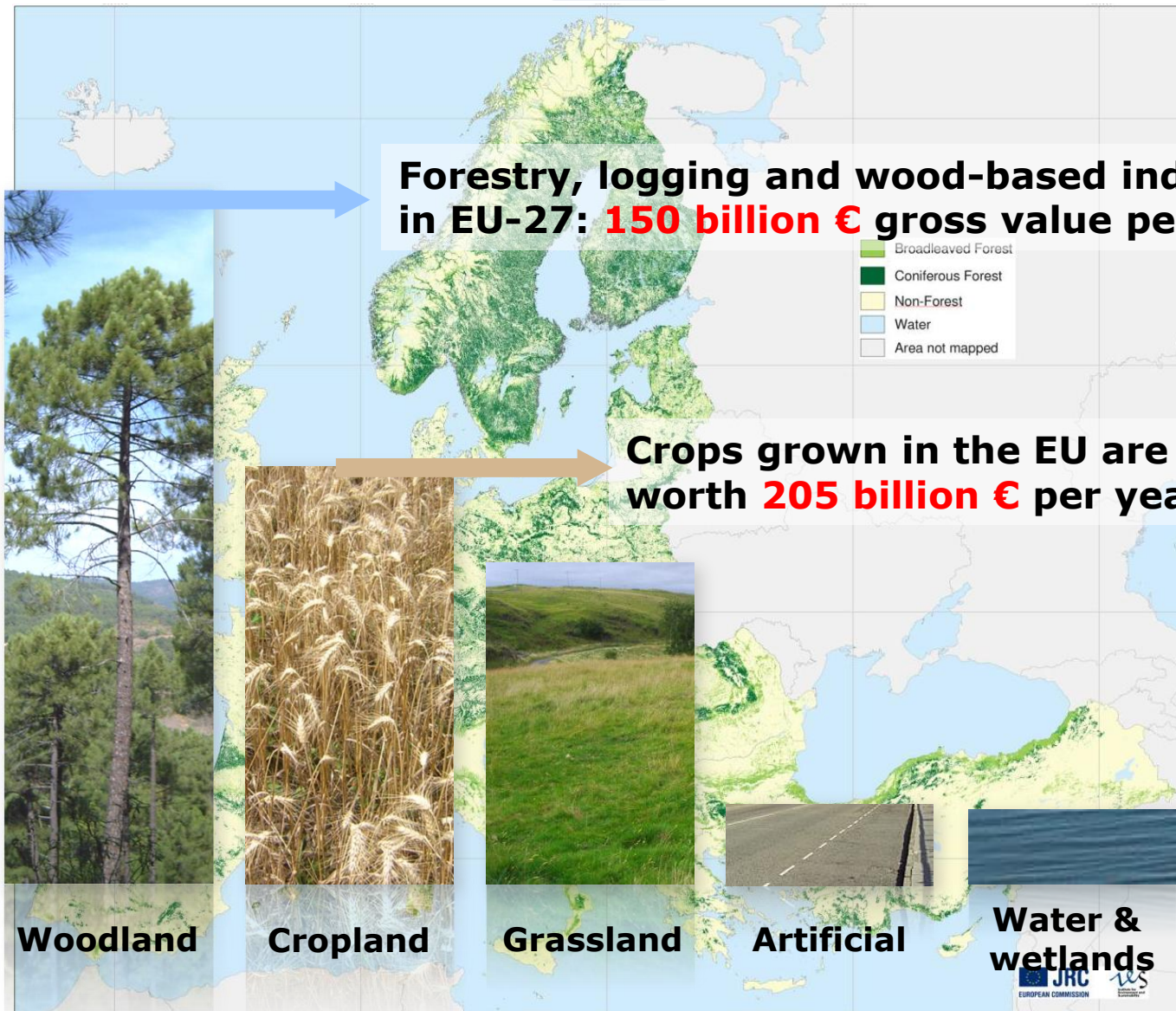
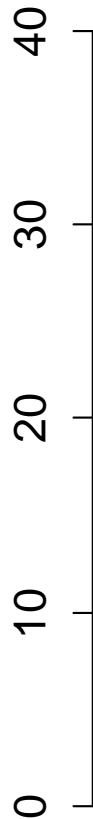
being a trusted peer and point of reference for both policy makers in the Commission and the scientific community, ensuring that EU policies are informed by the best available evidence

& Forest's importance:

- Environment
- Economy
- Society



European Landcover [%]



Forest Resources and Climate:

central hub in the JRC for forest related studies:

- Forest Observatory: with emphasis on the tropics - **REDD+**
- Forest Information Systems: integrated modelling of all aspects of forest policies. Emphasis is on Europe
- Green House Gas Inventories: coordination and enhancement of UNFCCC reporting

Biomass as independent task is strongly interlinked with all the above activities

JRC biomass project

- Overarching JRC study for the assessment of EU and global biomass **supply, demand, flows, and sustainability**
- **Long-term mandate** to support EU level policy making.
- Covering all sources of biomass and all uses
- **Addressing impacts** linked with production and use of biomass, **competition and synergies between sectors** for biomass resources
- **Scenarios** and projection for biomass supply and demand and their respective impacts, with **short-term** (2020) **and medium-term** (2030) perspectives

Objectives first 2 years (2015-2016)

- Set up a **knowledge-base on biomass** relevant issues at EU and global level and identify gaps.
- Develop **projections of future biomass supply and demand** and related impacts under given policy scenarios.

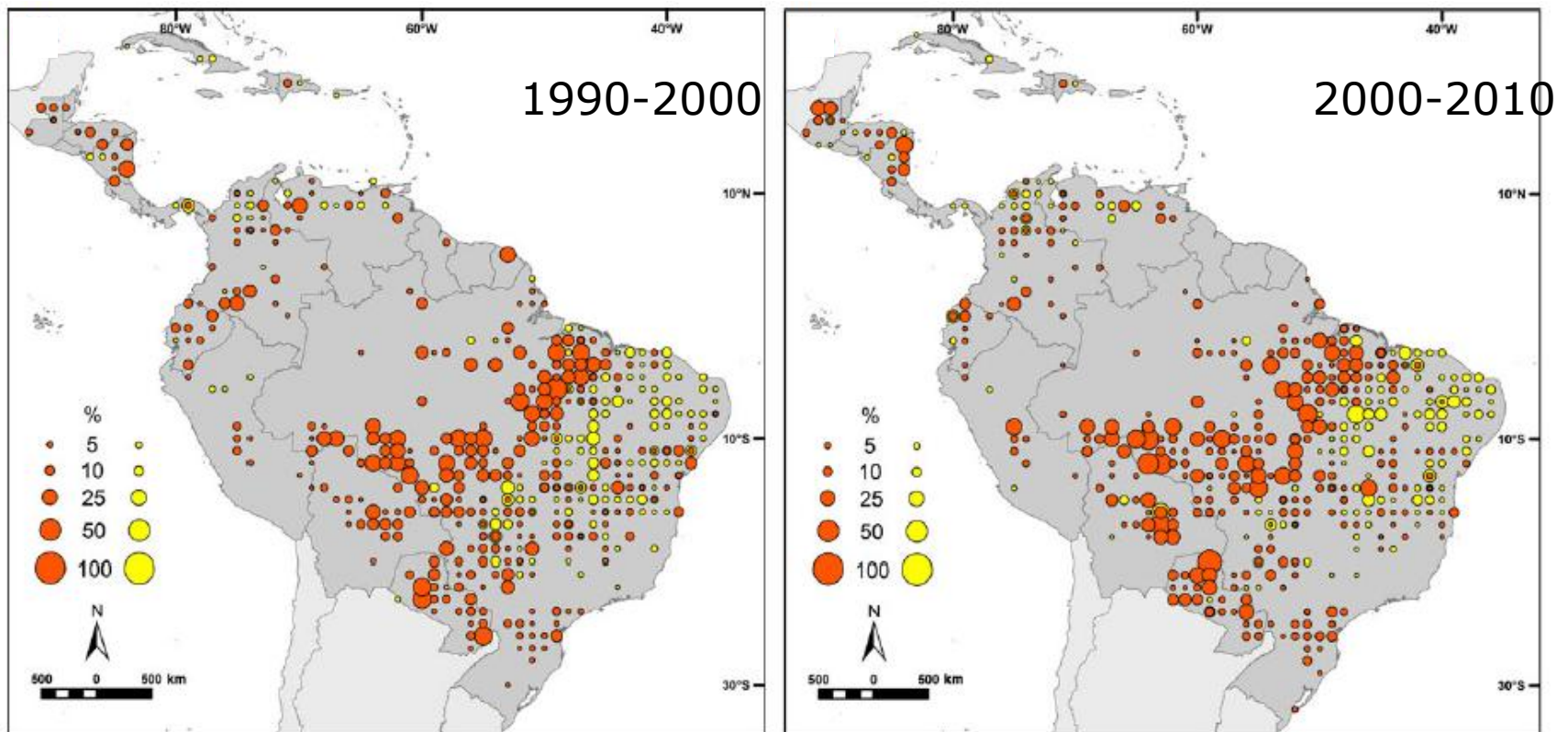
Advances end 2015

- **Task 1:** Review of Literature and existing datasets completed
- **Tasks 2-5:** preliminary versions of all deliverables submitted to EC services
- Knowledge base (so far) mostly based on existing statistical datasets
- Modelling framework for future projections designed and test runs made
- More background info on the study:
<https://biobs.jrc.ec.europa.eu/biomass-assessment-study-jrc>

Global Change Biology (2014), doi: 10.1111/gcb.12605

Determination of tropical deforestation rates and related carbon losses from 1990 to 2010

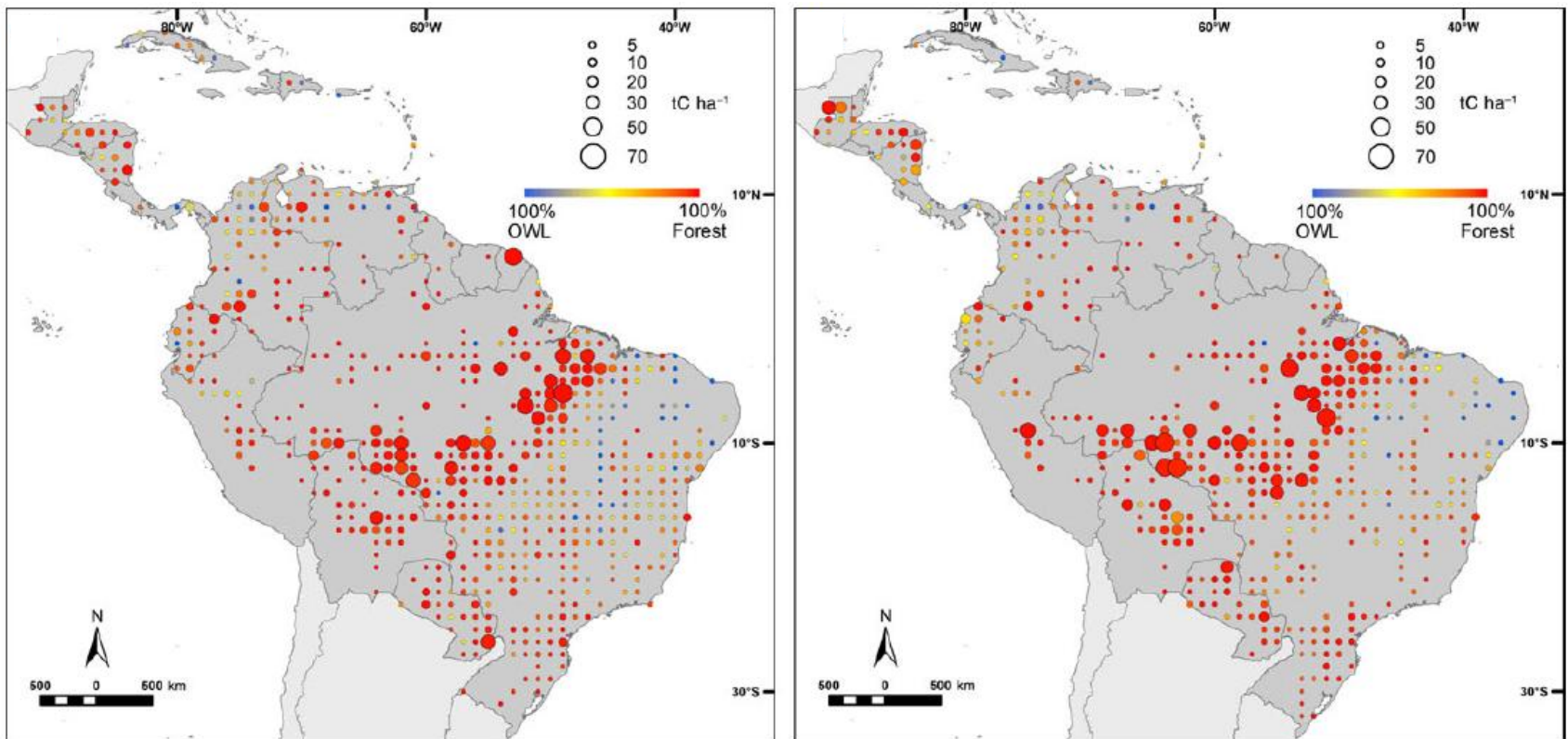
FRÉDÉRIC ACHARD¹, RENÉ BEUCHLE¹, PHILIPPE MAYAUX¹, HANS-JÜRGEN STIBIG¹,



Global Change Biology (2014), doi: 10.1111/gcb.12605

Determination of tropical deforestation rates and related carbon losses from 1990 to 2010

FRÉDÉRIC ACHARD¹, RENÉ BEUCHLE¹, PHILIPPE MAYAUX¹, HANS-JÜRGEN STIBIG¹,

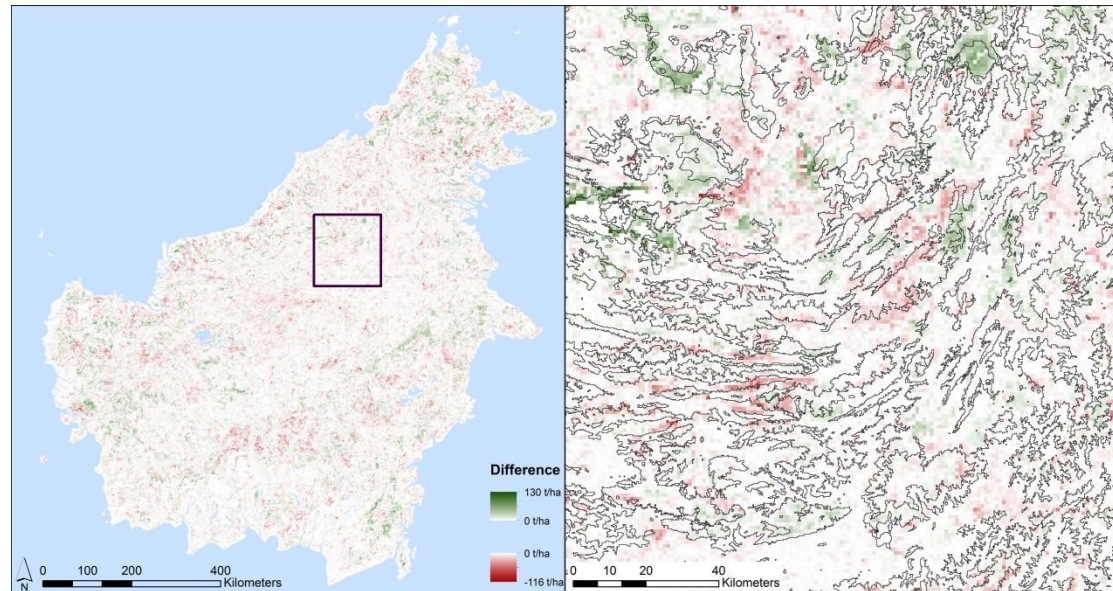
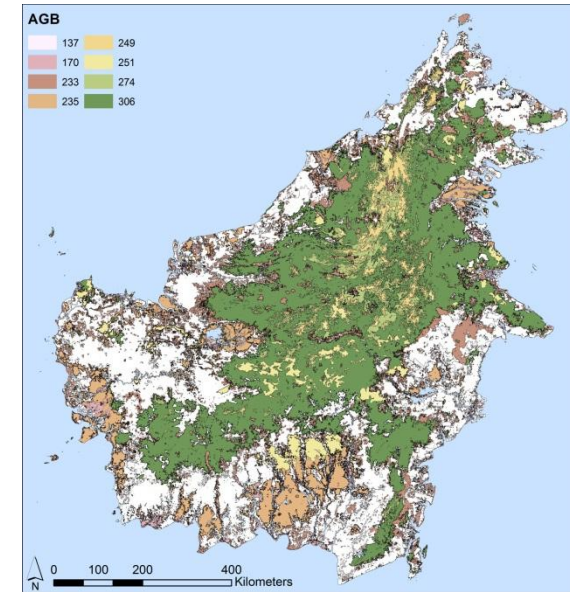


Article

Assessment of Above-Ground Biomass of Borneo Forests through a New Data-Fusion Approach Combining Two Pan-Tropical Biomass Maps

Andreas Langner ^{1,*}, Frédéric Achard ¹, Christelle Vancutsem ¹, Jean-Francois Pekel ¹,
Dario Simonetti ¹, Giacomo Grassi ¹, Kanehiro Kitayama ² and Mikiyasu Nakayama ³

- Harmonisation
- Data-fusion
- Improvement



Post-Paris GHG necessities:

a “Framework for transparency of actions”

- Land sector has highest **uncertainty!**
- criteria for improved emission reporting are:
accuracy, consistency, completeness and **comparability**
- which must be combined with:
accessibility and **policy relevance**

**Increased trust in land sector GHG assessments
is key to the success of the Paris Agreement !**